

**RDH11 Antibody (N-Terminus)**  
**Rabbit Polyclonal Antibody**  
**Catalog # ALS12229****Specification**

---

**RDH11 Antibody (N-Terminus) - Product Information**

Application	IHC
Primary Accession	<a href="#">O8TC12</a>
Reactivity	Human
Host	Rabbit
Clonality	Polyclonal
Calculated MW	35kDa KDa

**RDH11 Antibody (N-Terminus) - Additional Information****Gene ID** 51109**Other Names**

Retinol dehydrogenase 11, 1.1.1.300, Androgen-regulated short-chain dehydrogenase/reductase 1, HCV core-binding protein HCBP12, Prostate short-chain dehydrogenase/reductase 1, Retinal reductase 1, RaIR1, RDH11, ARSDR1, PSDR1

**Target/Specificity**

N terminal sequence MVELMFP and the C terminal sequence LLGLPID of the human PSDR1 protein.

**Reconstitution & Storage**

Long term: -20°C; Short term: +4°C; Avoid freeze-thaw cycles.

**Precautions**

RDH11 Antibody (N-Terminus) is for research use only and not for use in diagnostic or therapeutic procedures.

**RDH11 Antibody (N-Terminus) - Protein Information****Name** RDH11**Synonyms** ARSDR1, PSDR1, SDR7C1**Function**

Retinol dehydrogenase with a clear preference for NADP. Displays high activity towards 9-cis, 11-cis and all-trans-retinol, and to a lesser extent on 13-cis-retinol (PubMed:[12036956](http://www.uniprot.org/citations/12036956)), PubMed:[12226107](http://www.uniprot.org/citations/12226107)), PubMed:[29410696](http://www.uniprot.org/citations/29410696)). Exhibits a low reductive activity towards unsaturated medium-chain aldehydes such as cis -6-nonenal and no activity toward nonanal or 4-hydroxy-nonenal (PubMed:[15865448](http://www.uniprot.org/citations/15865448)). Has no dehydrogenase activity towards steroid (PubMed:[15865448](http://www.uniprot.org/citations/15865448)).

href="http://www.uniprot.org/citations/12036956" target="\_blank">12036956</a>, PubMed:<a href="http://www.uniprot.org/citations/12226107" target="\_blank">12226107</a>).

#### Cellular Location

Endoplasmic reticulum membrane; Single-pass type II membrane protein

#### Tissue Location

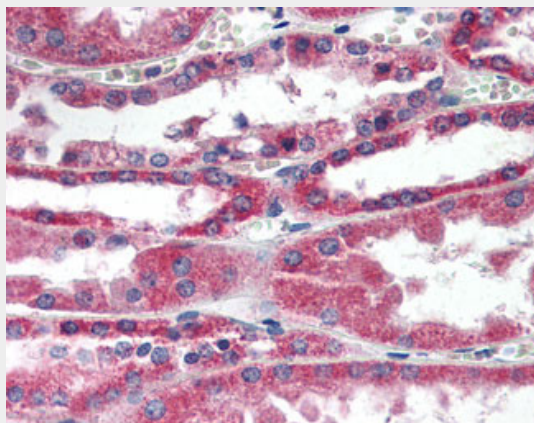
Predominantly expressed in the epithelial cells of prostate, in both basal and luminal secretory cell populations Expressed at low levels in spleen, thymus, testis, ovary, small intestine, colon, peripheral blood leukocytes, kidney, adrenal gland and fetal liver. Not detected in prostatic fibromuscular stromal cells, endothelial cells, or infiltrating lymphocytes

#### RDH11 Antibody (N-Terminus) - Protocols

Provided below are standard protocols that you may find useful for product applications.

- [Western Blot](#)
- [Blocking Peptides](#)
- [Dot Blot](#)
- [Immunohistochemistry](#)
- [Immunofluorescence](#)
- [Immunoprecipitation](#)
- [Flow Cytometry](#)
- [Cell Culture](#)

#### RDH11 Antibody (N-Terminus) - Images



Anti-RDH11 antibody IHC of human kidney.

#### RDH11 Antibody (N-Terminus) - Background

Exhibits an oxidoreductive catalytic activity towards retinoids. Most efficient as an NADPH-dependent retinal reductase. Displays high activity towards 9-cis and all-trans-retinol. Also involved in the metabolism of short-chain aldehydes. No steroid dehydrogenase activity detected.

#### RDH11 Antibody (N-Terminus) - References

- Lin B.,et al.Cancer Res. 61:1611-1618(2001).  
Li K.,et al.Submitted (JUN-2001) to the EMBL/GenBank/DDBJ databases.  
Lai C.-H.,et al.Genome Res. 10:703-713(2000).  
Ebert L.,et al.Submitted (JUN-2004) to the EMBL/GenBank/DDBJ databases.

Ota T., et al. Nat. Genet. 36:40-45(2004).