

ARSB / Arylsulfatase B Antibody (Internal)
Goat Polyclonal Antibody
Catalog # ALS12210**Specification**

ARSB / Arylsulfatase B Antibody (Internal) - Product Information

Application	WB, IHC
Primary Accession	P15848
Reactivity	Human, Monkey
Host	Goat
Clonality	Polyclonal
Calculated MW	60kDa KDa

ARSB / Arylsulfatase B Antibody (Internal) - Additional Information**Gene ID** 411**Other Names**

Arylsulfatase B, ASB, 3.1.6.12, N-acetylgalactosamine-4-sulfatase, G4S, ARSB

Target/Specificity

Human ARSB. This antibody is expected to recognise both reported isoforms (NP_000037.2; NP_942002.1).

Reconstitution & Storage

Store at -20°C. Minimize freezing and thawing.

Precautions

ARSB / Arylsulfatase B Antibody (Internal) is for research use only and not for use in diagnostic or therapeutic procedures.

ARSB / Arylsulfatase B Antibody (Internal) - Protein Information**Name** ARSB**Function**

Removes sulfate groups from chondroitin-4-sulfate (C4S) and regulates its degradation (PubMed:19306108). Involved in the regulation of cell adhesion, cell migration and invasion in colonic epithelium (PubMed:19306108). In the central nervous system, is a regulator of neurite outgrowth and neuronal plasticity, acting through the control of sulfate glycosaminoglycans and neurocan levels (By similarity).

Cellular Location

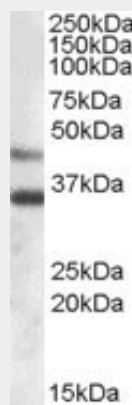
Lysosome {ECO:0000250|UniProtKB:P50429}. Cell surface {ECO:0000250|UniProtKB:P50429}

ARSB / Arylsulfatase B Antibody (Internal) - Protocols

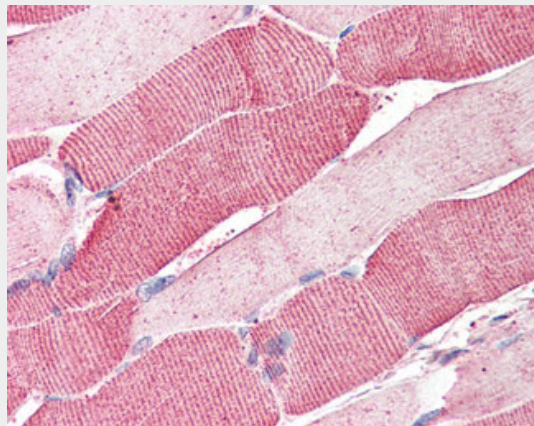
Provided below are standard protocols that you may find useful for product applications.

- [Western Blot](#)
- [Blocking Peptides](#)
- [Dot Blot](#)
- [Immunohistochemistry](#)
- [Immunofluorescence](#)
- [Immunoprecipitation](#)
- [Flow Cytometry](#)
- [Cell Culture](#)

ARSB / Arylsulfatase B Antibody (Internal) - Images



Antibody (0.03 ug/ml) staining of Human Heart lysate (35 ug protein in RIPA buffer).



Anti-ARSB antibody IHC of human skeletal muscle.

ARSB / Arylsulfatase B Antibody (Internal) - Background

Removes sulfate groups from chondroitin-4-sulfate (C4S) and regulates its degradation (PubMed:19306108). Involved in the regulation of cell adhesion, cell migration and invasion in colonic epithelium (PubMed:19306108). In the central nervous system, is a regulator of neurite outgrowth and neuronal plasticity, acting through the control of sulfate glycosaminoglycans and neurocan levels (By similarity).

ARSB / Arylsulfatase B Antibody (Internal) - References

Peters C.,et al.J. Biol. Chem. 265:3374-3381(1990).
Schuchman E.H.,et al.Genomics 6:149-158(1990).
Modaressi S.,et al.Biol. Chem. Hoppe-Seyler 374:327-335(1993).
Ota T.,et al.Nat. Genet. 36:40-45(2004).
Schmutz J.,et al.Nature 431:268-274(2004).