

**B2M / Beta 2 Microglobulin Antibody (clone 2213)**  
**Mouse Monoclonal Antibody**  
**Catalog # ALS12181**

**Specification**

---

**B2M / Beta 2 Microglobulin Antibody (clone 2213) - Product Information**

|                   |                        |
|-------------------|------------------------|
| Application       | IHC                    |
| Primary Accession | <a href="#">P61769</a> |
| Reactivity        | Human                  |
| Host              | Mouse                  |
| Clonality         | Monoclonal             |
| Calculated MW     | 14kDa KDa              |

**B2M / Beta 2 Microglobulin Antibody (clone 2213) - Additional Information**

Gene ID 567

**Other Names**

Beta-2-microglobulin, Beta-2-microglobulin form pl 5.3, B2M

**Target/Specificity**

Specific for human beta 2 microglobulin. B2M is the beta chain of MHC class I molecules. The precursor protein has a molecular weight of approximately 14 kD and is 119 amino acids in length.

**Reconstitution & Storage**

+4°C or -20°C, Avoid repeated freezing and thawing.

**Precautions**

B2M / Beta 2 Microglobulin Antibody (clone 2213) is for research use only and not for use in diagnostic or therapeutic procedures.

**B2M / Beta 2 Microglobulin Antibody (clone 2213) - Protein Information**

Name B2M ([HGNC:914](#))

**Function**

Component of the class I major histocompatibility complex (MHC). Involved in the presentation of peptide antigens to the immune system. Exogenously applied M.tuberculosis EsxA or EsxA-EsxB (or EsxA expressed in host) binds B2M and decreases its export to the cell surface (total protein levels do not change), probably leading to defects in class I antigen presentation (PubMed:<a href="http://www.uniprot.org/citations/25356553" target="\_blank">25356553</a>).

**Cellular Location**

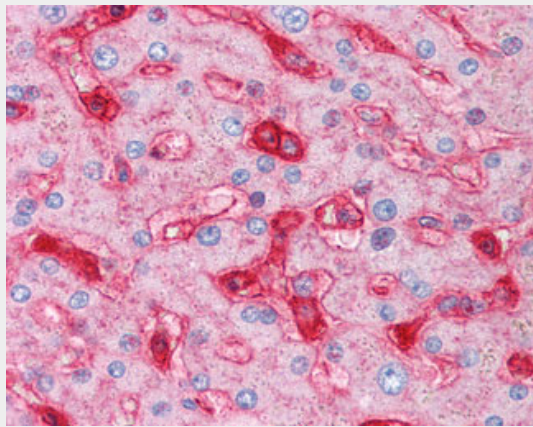
Secreted. Cell surface. Note=Detected in serum and urine (PubMed:1336137, PubMed:7554280). {ECO:0000269|PubMed:7554280, ECO:0000269|Ref.6}

## B2M / Beta 2 Microglobulin Antibody (clone 2213) - Protocols

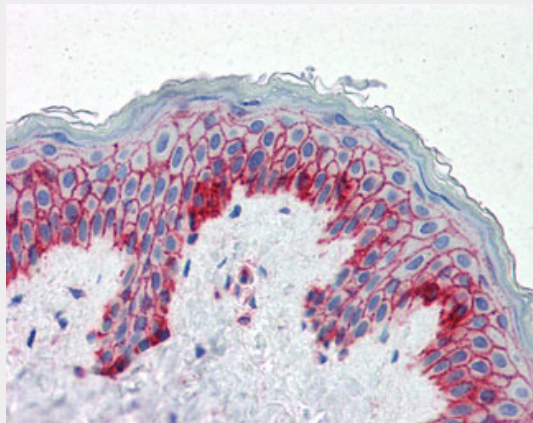
Provided below are standard protocols that you may find useful for product applications.

- [Western Blot](#)
- [Blocking Peptides](#)
- [Dot Blot](#)
- [Immunohistochemistry](#)
- [Immunofluorescence](#)
- [Immunoprecipitation](#)
- [Flow Cytometry](#)
- [Cell Culture](#)

## B2M / Beta 2 Microglobulin Antibody (clone 2213) - Images



Anti-B2M antibody IHC of human liver.



Anti-B2M antibody IHC of human skin.

## B2M / Beta 2 Microglobulin Antibody (clone 2213) - Background

Component of the class I major histocompatibility complex (MHC). Involved in the presentation of peptide antigens to the immune system.

## B2M / Beta 2 Microglobulin Antibody (clone 2213) - References

- Guessow D., et al. J. Immunol. 139:3132-3138(1987).  
He X.H., et al. Sheng Wu Gong Cheng Xue Bao 20:99-103(2004).  
Matsumoto K., et al. Submitted (DEC-1998) to the EMBL/GenBank/DBJ databases.

Tan J., et al. Submitted (SEP-2005) to the EMBL/GenBank/DDBJ databases.

Zhao Z., et al. Submitted (JUN-1998) to the EMBL/GenBank/DDBJ databases.