

MMP11 Antibody (clone SL3.05)
Mouse Monoclonal Antibody
Catalog # ALS12157

Specification

MMP11 Antibody (clone SL3.05) - Product Information

Application	IHC
Primary Accession	P24347
Reactivity	Human
Host	Mouse
Clonality	Monoclonal
Calculated MW	55kDa KDa

MMP11 Antibody (clone SL3.05) - Additional Information

Gene ID 4320

Other Names

Stromelysin-3, SL-3, ST3, 3.4.24.-, Matrix metalloproteinase-11, MMP-11, MMP11, STMY3

Target/Specificity

Recognizes human MMP-11 (Stromelysin 3). Preferred for sensitive detection of MMP-11 by Western Blot as well as for staining of routine formalin-fixed, paraffin-embedded tissues.

Reconstitution & Storage

Long term: -20°C; Short term: +4°C. Avoid repeat freeze-thaw cycles.

Precautions

MMP11 Antibody (clone SL3.05) is for research use only and not for use in diagnostic or therapeutic procedures.

MMP11 Antibody (clone SL3.05) - Protein Information

Name MMP11

Synonyms STMY3

Function

May play an important role in the progression of epithelial malignancies.

Cellular Location

Secreted, extracellular space, extracellular matrix

Tissue Location

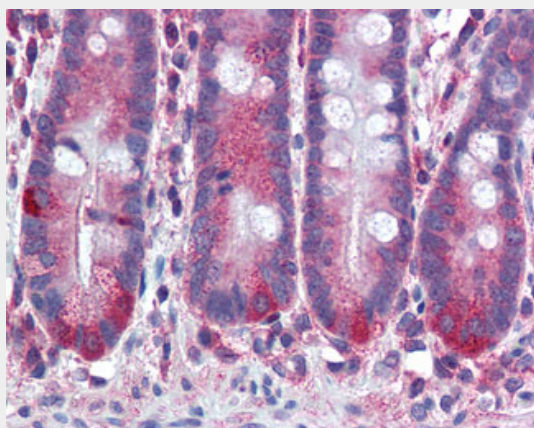
Specifically expressed in stromal cells of breast carcinomas

MMP11 Antibody (clone SL3.05) - Protocols

Provided below are standard protocols that you may find useful for product applications.

- [Western Blot](#)
- [Blocking Peptides](#)
- [Dot Blot](#)
- [Immunohistochemistry](#)
- [Immunofluorescence](#)
- [Immunoprecipitation](#)
- [Flow Cytometry](#)
- [Cell Culture](#)

MMP11 Antibody (clone SL3.05) - Images



Anti-MMP11 antibody IHC of human small intestine.

MMP11 Antibody (clone SL3.05) - Background

May play an important role in the progression of epithelial malignancies.

MMP11 Antibody (clone SL3.05) - References

- Basset P., et al. Nature 348:699-704(1990).
Dunham I., et al. Nature 402:489-495(1999).
Anglard P., et al. J. Biol. Chem. 270:20337-20344(1995).
Pei D., et al. Nature 375:244-247(1995).
Sjoeblom T., et al. Science 314:268-274(2006).