

CD105 Antibody (aa26-176)
Rabbit Polyclonal Antibody
Catalog # ALS12156**Specification**

CD105 Antibody (aa26-176) - Product Information

Application	IHC
Primary Accession	P17813
Reactivity	Human
Host	Rabbit
Clonality	Polyclonal
Calculated MW	71kDa KDa

CD105 Antibody (aa26-176) - Additional Information**Gene ID** 2022**Other Names**

Endoglin, CD105, ENG, END

Target/Specificity

Recognizes human CD105.

Reconstitution & Storage

Long term: -20°C; Short term: +4°C. Avoid repeat freeze-thaw cycles.

Precautions

CD105 Antibody (aa26-176) is for research use only and not for use in diagnostic or therapeutic procedures.

CD105 Antibody (aa26-176) - Protein Information**Name** ENG**Synonyms** END**Function**

Vascular endothelium glycoprotein that plays an important role in the regulation of angiogenesis (PubMed: [21737454](http://www.uniprot.org/citations/21737454)), PubMed: [23300529](http://www.uniprot.org/citations/23300529)). Required for normal structure and integrity of adult vasculature (PubMed: [7894484](http://www.uniprot.org/citations/7894484)). Regulates the migration of vascular endothelial cells (PubMed: [17540773](http://www.uniprot.org/citations/17540773)). Required for normal extraembryonic angiogenesis and for embryonic heart development (By similarity). May regulate endothelial cell shape changes in response to blood flow, which drive vascular remodeling and establishment of normal vascular morphology during angiogenesis (By similarity). May play a critical role in the binding of endothelial cells to integrins and/or other RGD receptors (PubMed:

<http://www.uniprot.org/citations/1692830> target="_blank">1692830). Acts as a TGF-beta coreceptor and is involved in the TGF-beta/BMP signaling cascade that ultimately leads to the activation of SMAD transcription factors (PubMed:21737454, PubMed:22347366, PubMed:23300529, PubMed:8370410). Required for GDF2/BMP9 signaling through SMAD1 in endothelial cells and modulates TGFB1 signaling through SMAD3 (PubMed:21737454, PubMed:22347366, PubMed:23300529).

Cellular Location

Cell membrane; Single-pass type I membrane protein

Tissue Location

Detected on umbilical vein endothelial cells (PubMed:10625079). Detected in placenta (at protein level) (PubMed:1692830). Detected on endothelial cells (PubMed:1692830)

Volume

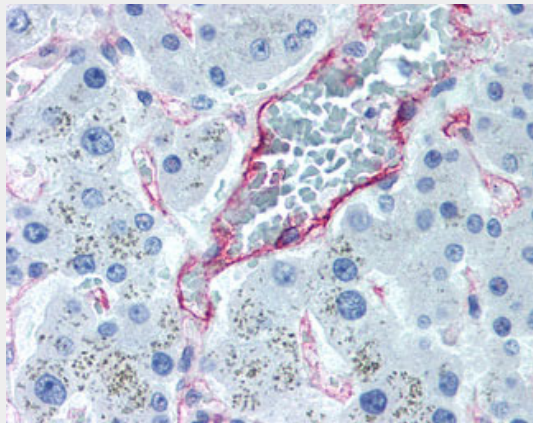
50 µl

CD105 Antibody (aa26-176) - Protocols

Provided below are standard protocols that you may find useful for product applications.

- [Western Blot](#)
- [Blocking Peptides](#)
- [Dot Blot](#)
- [Immunohistochemistry](#)
- [Immunofluorescence](#)
- [Immunoprecipitation](#)
- [Flow Cytometry](#)
- [Cell Culture](#)

CD105 Antibody (aa26-176) - Images



Anti-ENG / CD105 antibody IHC of human liver.

CD105 Antibody (aa26-176) - Background

Major glycoprotein of vascular endothelium. Involved in the regulation of angiogenesis. May play a critical role in the binding of endothelial cells to integrins and/or other RGD receptors. Acts as TGF-beta coreceptor and is involved in the TGF- beta/BMP signaling cascade. Required for GDF2/BMP9 signaling through SMAD1 in endothelial cells and modulates TGF-beta1 signaling through SMAD3.

CD105 Antibody (aa26-176) - References

- Bellon T.,et al.Eur. J. Immunol. 23:2340-2345(1993).
Humphray S.J.,et al.Nature 429:369-374(2004).
Mural R.J.,et al.Submitted (JUL-2005) to the EMBL/GenBank/DDBJ databases.
Gougos A.,et al.J. Biol. Chem. 265:8361-8364(1990).
McAllister K.A.,et al.Nat. Genet. 8:345-351(1994).