

ERBB3 / HER3 Antibody (C-Terminus)
Goat Polyclonal Antibody
Catalog # ALS12146**Specification**

ERBB3 / HER3 Antibody (C-Terminus) - Product Information

Application	IHC
Primary Accession	P21860
Reactivity	Human, Rat, Hamster, Monkey, Pig, Horse
Host	Goat
Clonality	Polyclonal
Calculated MW	148kDa KDa

ERBB3 / HER3 Antibody (C-Terminus) - Additional Information**Gene ID** 2065**Other Names**

Receptor tyrosine-protein kinase erbB-3, 2.7.10.1, Proto-oncogene-like protein c-ErbB-3, Tyrosine kinase-type cell surface receptor HER3, ERBB3, HER3

Target/Specificity

Human ERBB3. This antibody is expected to recognise isoform 1 (NP_001973.2) only.

Reconstitution & Storage

Store at -20°C. Minimize freezing and thawing.

Precautions

ERBB3 / HER3 Antibody (C-Terminus) is for research use only and not for use in diagnostic or therapeutic procedures.

ERBB3 / HER3 Antibody (C-Terminus) - Protein Information**Name** ERBB3**Synonyms** HER3**Function**

Tyrosine-protein kinase that plays an essential role as cell surface receptor for neuregulins. Binds to neuregulin-1 (NRG1) and is activated by it; ligand-binding increases phosphorylation on tyrosine residues and promotes its association with the p85 subunit of phosphatidylinositol 3-kinase (PubMed:20682778). May also be activated by CSPG5 (PubMed:15358134). Involved in the regulation of myeloid cell differentiation (PubMed:27416908).

Cellular Location

[Isoform 1]: Cell membrane; Single-pass type I membrane protein

Tissue Location

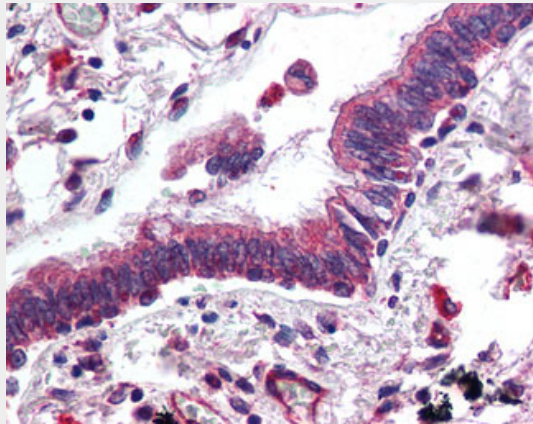
Epithelial tissues and brain.

ERBB3 / HER3 Antibody (C-Terminus) - Protocols

Provided below are standard protocols that you may find useful for product applications.

- [Western Blot](#)
- [Blocking Peptides](#)
- [Dot Blot](#)
- [Immunohistochemistry](#)
- [Immunofluorescence](#)
- [Immunoprecipitation](#)
- [Flow Cytometry](#)
- [Cell Culture](#)

ERBB3 / HER3 Antibody (C-Terminus) - Images



Anti-HER3 antibody IHC of human lung, respiratory epithelium.

ERBB3 / HER3 Antibody (C-Terminus) - Background

Binds and is activated by neuregulins and NTAK. May also be activated by CSPG5.

ERBB3 / HER3 Antibody (C-Terminus) - References

- Kraus M.H., et al. Proc. Natl. Acad. Sci. U.S.A. 86:9193-9197(1989).
Plowman G.D., et al. Proc. Natl. Acad. Sci. U.S.A. 87:4905-4909(1990).
Kato M., et al. Biochem. Biophys. Res. Commun. 192:1189-1197(1993).
Kalinine N., et al. Submitted (MAY-2003) to the EMBL/GenBank/DDBJ databases.
Ota T., et al. Nat. Genet. 36:40-45(2004).