

**ADORA2A/Adenosine A2A Receptor Antibody (3rd Intracellular Domain)**  
**Mouse Monoclonal Antibody**  
**Catalog # ALS12144**

**Specification**

---

**ADORA2A/Adenosine A2A Receptor Antibody (3rd Intracellular Domain) - Product Information**

Application	IHC
Primary Accession	<a href="#">P29274</a>
Reactivity	Human, Mouse, Rat, Rabbit, Guinea Pig, Dog
Host	Mouse
Clonality	Monoclonal
Calculated MW	45kDa KDa

**ADORA2A/Adenosine A2A Receptor Antibody (3rd Intracellular Domain) - Additional Information**

**Gene ID** 135

**Other Names**

Adenosine receptor A2a, ADORA2A, ADORA2

**Target/Specificity**

Recognizes human adenosine receptor A2A at ~43kD.

**Reconstitution & Storage**

Long term: -20°C; Short term: +4°C; Avoid freeze-thaw cycles.

**Precautions**

ADORA2A/Adenosine A2A Receptor Antibody (3rd Intracellular Domain) is for research use only and not for use in diagnostic or therapeutic procedures.

**ADORA2A/Adenosine A2A Receptor Antibody (3rd Intracellular Domain) - Protein Information**

**Name** ADORA2A

**Synonyms** ADORA2

**Function**

Receptor for adenosine (By similarity). The activity of this receptor is mediated by G proteins which activate adenylyl cyclase (By similarity).

**Cellular Location**

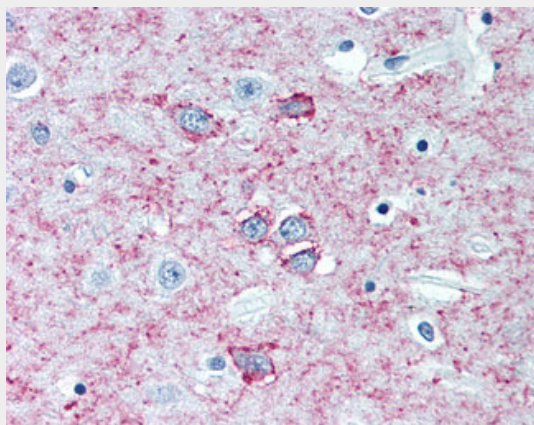
Cell membrane {ECO:0000250|UniProtKB:P30543}; Multi-pass membrane protein {ECO:0000250|UniProtKB:P30543} Note=Colocalizes with GAS2L2 at neuronal processes {ECO:0000250|UniProtKB:P30543}

## ADORA2A/Adenosine A2A Receptor Antibody (3rd Intracellular Domain) - Protocols

Provided below are standard protocols that you may find useful for product applications.

- [Western Blot](#)
- [Blocking Peptides](#)
- [Dot Blot](#)
- [Immunohistochemistry](#)
- [Immunofluorescence](#)
- [Immunoprecipitation](#)
- [Flow Cytometry](#)
- [Cell Culture](#)

## ADORA2A/Adenosine A2A Receptor Antibody (3rd Intracellular Domain) - Images



Anti-ADORA2A antibody IHC of human brain, putamen.

## ADORA2A/Adenosine A2A Receptor Antibody (3rd Intracellular Domain) - Background

Receptor for adenosine. The activity of this receptor is mediated by G proteins which activate adenylyl cyclase.

## ADORA2A/Adenosine A2A Receptor Antibody (3rd Intracellular Domain) - References

Tiffany H.L., et al. Submitted (JUL-1992) to the EMBL/GenBank/DDBJ databases.  
Salvatore C.A., et al. Submitted (SEP-1992) to the EMBL/GenBank/DDBJ databases.  
Furlong T.J., et al. Brain Res. Mol. Brain Res. 15:62-66(1992).  
Le F., et al. Biochem. Biophys. Res. Commun. 223:461-467(1996).  
Puhl H.L. III, et al. Submitted (JUL-2002) to the EMBL/GenBank/DDBJ databases.