

HAVCR1 / KIM-1 Antibody (aa200-300)
Rabbit Polyclonal Antibody
Catalog # ALS12075**Specification**

HAVCR1 / KIM-1 Antibody (aa200-300) - Product Information

Application	IHC
Primary Accession	O96D42
Reactivity	Human, Mouse
Host	Rabbit
Clonality	Polyclonal
Calculated MW	39kDa KDa

HAVCR1 / KIM-1 Antibody (aa200-300) - Additional Information**Gene ID** 26762**Other Names**

Hepatitis A virus cellular receptor 1, HAVcr-1, Kidney injury molecule 1, KIM-1, T-cell immunoglobulin and mucin domain-containing protein 1, TIMD-1, T-cell immunoglobulin mucin receptor 1, TIM, TIM-1, T-cell membrane protein 1, HAVCR1, KIM1, TIM1, TIMD1

Target/Specificity

A portion of amino acids 200-300 of human HAVCR1 protein was used as the immunogen.

Reconstitution & Storage

Store at 4°C for short term applications. For long term storage, aliquot and store at -20°C.

Precautions

HAVCR1 / KIM-1 Antibody (aa200-300) is for research use only and not for use in diagnostic or therapeutic procedures.

HAVCR1 / KIM-1 Antibody (aa200-300) - Protein Information**Name** HAVCR1**Synonyms** KIM1, TIM1, TIMD1**Function**

Phosphatidylserine receptor that plays an important functional role in regulatory B-cells homeostasis including generation, expansion and suppressor functions (By similarity). As P-selectin/SELPLG ligand, plays a specialized role in activated but not naive T-cell trafficking during inflammatory responses (PubMed: [24703780](http://www.uniprot.org/citations/24703780)). Controls thereby T-cell accumulation in the inflamed central nervous system (CNS) and the induction of autoimmune disease (PubMed: [24703780](http://www.uniprot.org/citations/24703780)). Regulates also expression of various anti-inflammatory cytokines and co-inhibitory ligands including IL10 (By similarity). Acts as a regulator of T-cell proliferation (By similarity). May play a role in kidney injury

and repair (PubMed:17471468).

Cellular Location

Cell membrane; Single-pass type I membrane protein

Tissue Location

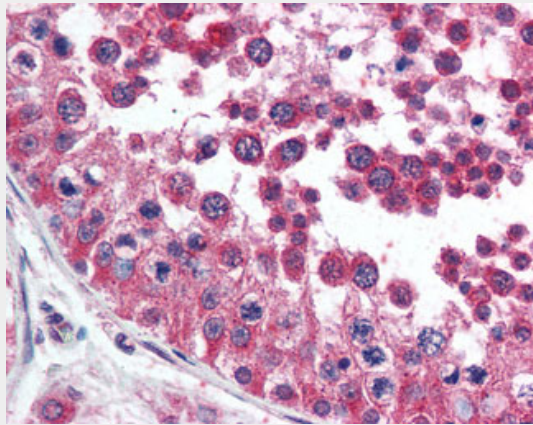
Widely expressed, with highest levels in kidney and testis. Expressed by activated CD4+ T-cells during the development of helper T-cells responses.

HAVCR1 / KIM-1 Antibody (aa200-300) - Protocols

Provided below are standard protocols that you may find useful for product applications.

- [Western Blot](#)
- [Blocking Peptides](#)
- [Dot Blot](#)
- [Immunohistochemistry](#)
- [Immunofluorescence](#)
- [Immunoprecipitation](#)
- [Flow Cytometry](#)
- [Cell Culture](#)

HAVCR1 / KIM-1 Antibody (aa200-300) - Images



Anti-TIM-1 antibody IHC of human testis.

HAVCR1 / KIM-1 Antibody (aa200-300) - Background

May play a role in T-helper cell development and the regulation of asthma and allergic diseases. Receptor for TIMD4 (By similarity). In case of human hepatitis A virus (HHAV) infection, functions as a cell-surface receptor for the virus. May play a role in kidney injury and repair.

HAVCR1 / KIM-1 Antibody (aa200-300) - References

- Feigelstock D., et al. J. Virol. 72:6621-6628(1998).
Ebert L., et al. Submitted (JUN-2004) to the EMBL/GenBank/DDBJ databases.
Schmutz J., et al. Nature 431:268-274(2004).
Tami C., et al. J. Virol. 81:3437-3446(2007).
van Timmeren M.M., et al. J. Pathol. 212:209-217(2007).