

ALAS1 Antibody (aa480-530)
Rabbit Polyclonal Antibody
Catalog # ALS12060**Specification**

ALAS1 Antibody (aa480-530) - Product Information

Application	WB, IHC
Primary Accession	P13196
Reactivity	Human
Host	Rabbit
Clonality	Polyclonal
Calculated MW	71kDa KDa

ALAS1 Antibody (aa480-530) - Additional Information**Gene ID** 211**Other Names**

5-aminolevulinate synthase, nonspecific, mitochondrial, ALAS-H, 2.3.1.37, 5-aminolevulinic acid synthase 1, Delta-ALA synthase 1, Delta-aminolevulinate synthase 1, ALAS1, ALAS3, ALASH

Target/Specificity

A portion of amino acids 480-530 of human ALAS-1 was used as the immunogen.

Reconstitution & Storage

Store at 4°C for short term applications. For long term storage, aliquot and store at -20°C.

Precautions

ALAS1 Antibody (aa480-530) is for research use only and not for use in diagnostic or therapeutic procedures.

ALAS1 Antibody (aa480-530) - Protein Information**Name** ALAS1**Synonyms** ALAS3, ALASH**Function**Catalyzes the pyridoxal 5'-phosphate (PLP)-dependent condensation of succinyl-CoA and glycine to form aminolevulinic acid (ALA), with CoA and CO₂ as by-products.**Cellular Location**

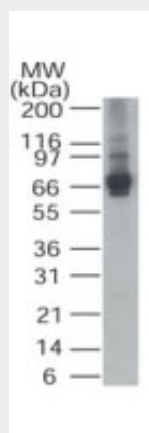
Mitochondrion inner membrane {ECO:0000250|UniProtKB:P22557}; Peripheral membrane protein {ECO:0000250|UniProtKB:P22557}. Note=Localizes to the matrix side of the mitochondrion inner membrane. {ECO:0000250|UniProtKB:P22557}

ALAS1 Antibody (aa480-530) - Protocols

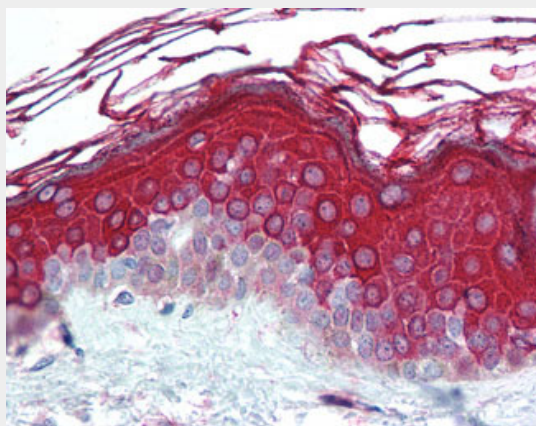
Provided below are standard protocols that you may find useful for product applications.

- [Western Blot](#)
- [Blocking Peptides](#)
- [Dot Blot](#)
- [Immunohistochemistry](#)
- [Immunofluorescence](#)
- [Immunoprecipitation](#)
- [Flow Cytometry](#)
- [Cell Culture](#)

ALAS1 Antibody (aa480-530) - Images



Western blot of ALAS-1 in HepG2 cell lysate using antibody at 1 ug/ml.



Anti-ALAS1 antibody IHC of human skin.

ALAS1 Antibody (aa480-530) - References

- Bishop D.F., et al. *Nucleic Acids Res.* 18:7187-7188(1990).
Bawden M.J., et al. *Nucleic Acids Res.* 15:8563-8563(1987).
Shichijo S., et al. Submitted (JUN-2001) to the EMBL/GenBank/DDBJ databases.