

**ICOSLG / ICOSL / ICOS Ligand Antibody (clone 2D3)**  
**Mouse Monoclonal Antibody**  
**Catalog # ALS12053**

**Specification**

---

**ICOSLG / ICOSL / ICOS Ligand Antibody (clone 2D3) - Product Information**

Application	IHC
Primary Accession	<a href="#">O75144</a>
Reactivity	Human
Host	Mouse
Clonality	Monoclonal

**ICOSLG / ICOSL / ICOS Ligand Antibody (clone 2D3) - Additional Information**

**Gene ID** 23308

**Other Names**

ICOS ligand, B7 homolog 2, B7-H2, B7-like protein GI50, B7-related protein 1, B7RP-1, CD275, ICOSLG, B7H2, B7RP1, ICOSL, KIAA0653

**Target/Specificity**

Human ICOSL/CD275/B7H2

**Reconstitution & Storage**

+4°C. Store undiluted.

**Precautions**

ICOSLG / ICOSL / ICOS Ligand Antibody (clone 2D3) is for research use only and not for use in diagnostic or therapeutic procedures.

**ICOSLG / ICOSL / ICOS Ligand Antibody (clone 2D3) - Protein Information**

**Name** ICOSLG

**Synonyms** B7H2, B7RP1, ICOSL, KIAA0653

**Function**

Ligand for the T-cell-specific cell surface receptor ICOS. Acts as a costimulatory signal for T-cell proliferation and cytokine secretion; induces also B-cell proliferation and differentiation into plasma cells. Could play an important role in mediating local tissue responses to inflammatory conditions, as well as in modulating the secondary immune response by co-stimulating memory T-cell function (By similarity).

**Cellular Location**

Cell membrane; Single-pass type I membrane protein

**Tissue Location**

Isoform 1 is widely expressed (brain, heart, kidney, liver, lung, pancreas, placenta, skeletal

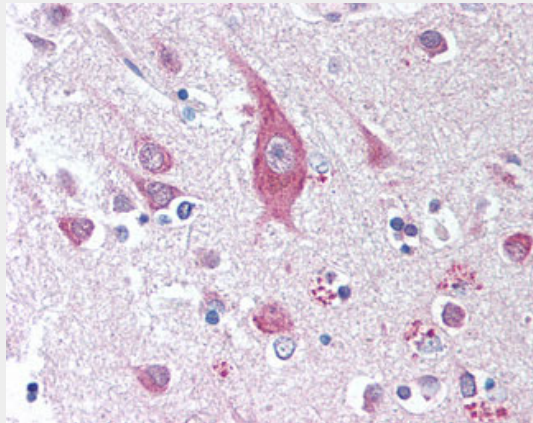
muscle, bone marrow, colon, ovary, prostate, testis, lymph nodes, leukocytes, spleen, thymus and tonsil), while isoform 2 is detected only in lymph nodes, leukocytes and spleen. Expressed on activated monocytes and dendritic cells.

### **ICOSLG / ICOSL / ICOS Ligand Antibody (clone 2D3) - Protocols**

Provided below are standard protocols that you may find useful for product applications.

- [Western Blot](#)
- [Blocking Peptides](#)
- [Dot Blot](#)
- [Immunohistochemistry](#)
- [Immunofluorescence](#)
- [Immunoprecipitation](#)
- [Flow Cytometry](#)
- [Cell Culture](#)

### **ICOSLG / ICOSL / ICOS Ligand Antibody (clone 2D3) - Images**



Anti-ICOSLG / ICOSL antibody IHC of human brain, cortex.