

**MMP1 Antibody**  
**Rabbit Polyclonal Antibody**  
**Catalog # ALS12016****Specification**

---

**MMP1 Antibody - Product Information**

Application	IHC
Primary Accession	<a href="#">P03956</a>
Reactivity	Human
Host	Rabbit
Clonality	Polyclonal
Calculated MW	54kDa KDa

**MMP1 Antibody - Additional Information**

**Gene ID** 4312

**Other Names**

Interstitial collagenase, 3.4.24.7, Fibroblast collagenase, Matrix metalloproteinase-1, MMP-1, 22 kDa interstitial collagenase, 27 kDa interstitial collagenase, MMP1, CLG

**Target/Specificity**

Synthetic collagenase-1 peptide derived from the hinge region of human MMP-1

**Reconstitution & Storage**

+4°C, avoid freezing

**Precautions**

MMP1 Antibody is for research use only and not for use in diagnostic or therapeutic procedures.

**MMP1 Antibody - Protein Information**

**Name** MMP1

**Synonyms** CLG

**Function**

Cleaves collagens of types I, II, and III at one site in the helical domain. Also cleaves collagens of types VII and X (PubMed: <http://www.uniprot.org/citations/1645757> target="\_blank">1645757</a>, PubMed: <http://www.uniprot.org/citations/2153297> target="\_blank">2153297</a>, PubMed: <http://www.uniprot.org/citations/2557822> target="\_blank">2557822</a>). In case of HIV infection, interacts and cleaves the secreted viral Tat protein, leading to a decrease in neuronal Tat's mediated neurotoxicity (PubMed: <http://www.uniprot.org/citations/16807369> target="\_blank">16807369</a>).

**Cellular Location**

Secreted, extracellular space, extracellular matrix

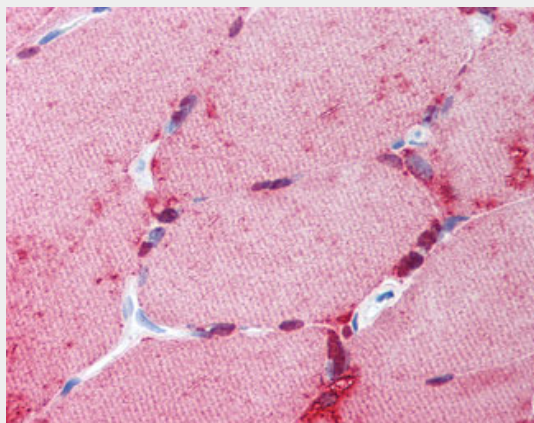
**Volume**  
250  $\mu$ l

### **MMP1 Antibody - Protocols**

Provided below are standard protocols that you may find useful for product applications.

- [Western Blot](#)
- [Blocking Peptides](#)
- [Dot Blot](#)
- [Immunohistochemistry](#)
- [Immunofluorescence](#)
- [Immunoprecipitation](#)
- [Flow Cytometry](#)
- [Cell Culture](#)

### **MMP1 Antibody - Images**



Anti-MMP1 antibody IHC of human skeletal muscle.

### **MMP1 Antibody - Background**

Cleaves collagens of types I, II, and III at one site in the helical domain. Also cleaves collagens of types VII and X. In case of HIV infection, interacts and cleaves the secreted viral Tat protein, leading to a decrease in neuronal Tat's mediated neurotoxicity.

### **MMP1 Antibody - References**

Templeton N.S., et al. *Cancer Res.* 50:5431-5437(1990).  
Whitham S.E., et al. *Biochem. J.* 240:913-916(1986).  
Goldberg G.I., et al. *J. Biol. Chem.* 261:6600-6605(1986).  
Lin D., et al. Submitted (DEC-1996) to the EMBL/GenBank/DDBJ databases.  
Kalnina N., et al. Submitted (OCT-2004) to the EMBL/GenBank/DDBJ databases.