

**GCG / Glucagon Antibody**  
**Rabbit Polyclonal Antibody**  
**Catalog # ALS12013****Specification**

---

**GCG / Glucagon Antibody - Product Information**

Application	IHC
Primary Accession	<a href="#">P01275</a>
Reactivity	Human, Mouse, Rat
Host	Rabbit
Clonality	Polyclonal
Calculated MW	21kDa KDa

**GCG / Glucagon Antibody - Additional Information****Gene ID** 2641**Other Names**

Glucagon, Glicentin, Glicentin-related polypeptide, GRPP, Oxyntomodulin, OXM, OXY, Glucagon, Glucagon-like peptide 1, GLP-1, Incretin hormone, Glucagon-like peptide 1(7-37), GLP-1(7-37), Glucagon-like peptide 1(7-36), GLP-1(7-36), Glucagon-like peptide 2, GLP-2, GCG

**Target/Specificity**

Human Glucagon protein

**Reconstitution & Storage**

+4°C or -20°C, Avoid repeated freezing and thawing.

**Precautions**

GCG / Glucagon Antibody is for research use only and not for use in diagnostic or therapeutic procedures.

**GCG / Glucagon Antibody - Protein Information****Name** GCG ([HGNC:4191](#))**Function**

[Glucagon]: Plays a key role in glucose metabolism and homeostasis. Regulates blood glucose by increasing gluconeogenesis and decreasing glycolysis. A counterregulatory hormone of insulin, raises plasma glucose levels in response to insulin-induced hypoglycemia. Plays an important role in initiating and maintaining hyperglycemic conditions in diabetes.

**Cellular Location**

Secreted.

**Tissue Location**

[Glucagon]: Secreted in the A cells of the islets of Langerhans. [Glucagon-like peptide 2]: Secreted from enteroendocrine cells throughout the gastrointestinal tract. Also secreted in selected neurons

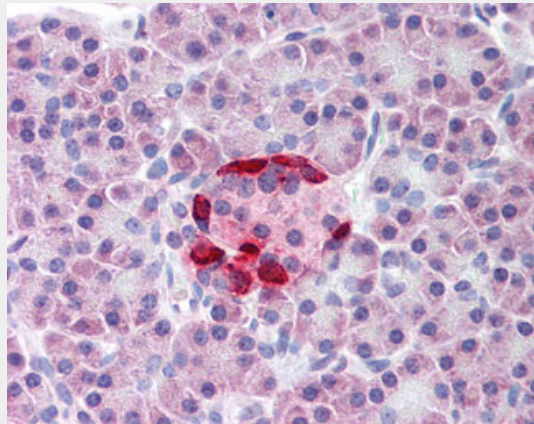
in the brain [Oxyntomodulin]: Secreted from enteroendocrine cells throughout the gastrointestinal tract

### GCG / Glucagon Antibody - Protocols

Provided below are standard protocols that you may find useful for product applications.

- [Western Blot](#)
- [Blocking Peptides](#)
- [Dot Blot](#)
- [Immunohistochemistry](#)
- [Immunofluorescence](#)
- [Immunoprecipitation](#)
- [Flow Cytometry](#)
- [Cell Culture](#)

### GCG / Glucagon Antibody - Images



Anti-Glucagon antibody IHC of human pancreas.

### GCG / Glucagon Antibody - Background

Glucagon plays a key role in glucose metabolism and homeostasis. Regulates blood glucose by increasing gluconeogenesis and decreasing glycolysis. A counterregulatory hormone of insulin, raises plasma glucose levels in response to insulin-induced hypoglycemia. Plays an important role in initiating and maintaining hyperglycemic conditions in diabetes. GLP-2 stimulates intestinal growth and up-regulates villus height in the small intestine, concomitant with increased crypt cell proliferation and decreased enterocyte apoptosis. The gastrointestinal tract, from the stomach to the colon is the principal target for GLP-2 action. Plays a key role in nutrient homeostasis, enhancing nutrient assimilation through enhanced gastrointestinal function, as well as increasing nutrient disposal. Stimulates intestinal glucose transport and decreases mucosal permeability. Glicentin may modulate gastric acid secretion and the gastro-pyloro-duodenal activity. May play an important role in intestinal mucosal growth in the early period of life.

### GCG / Glucagon Antibody - References

- Drucker D.J., et al. *J. Biol. Chem.* 263:13475-13478(1988).  
White J.W., et al. *Nucleic Acids Res.* 14:4719-4730(1986).  
Bell G.I., et al. *Nature* 304:368-371(1983).  
Kalnina N., et al. Submitted (MAY-2003) to the EMBL/GenBank/DDBJ databases.

Hillier L.W.,et al.Nature 434:724-731(2005).