

Basigin / Emmprin / CD147 Antibody (clone MEM-M6/2)
Mouse Monoclonal Antibody
Catalog # ALS11983

Specification

Basigin / Emmprin / CD147 Antibody (clone MEM-M6/2) - Product Information

Application	IHC
Primary Accession	P35613
Reactivity	Human, Pig
Host	Mouse
Clonality	Monoclonal
Calculated MW	42kDa KDa

Basigin / Emmprin / CD147 Antibody (clone MEM-M6/2) - Additional Information

Gene ID 682

Other Names

Basigin, 5F7, Collagenase stimulatory factor, Extracellular matrix metalloproteinase inducer, EMMPRIN, Leukocyte activation antigen M6, OK blood group antigen, Tumor cell-derived collagenase stimulatory factor, TCSF, CD147, BSG

Target/Specificity

A soluble recombinant form of CD147, CD147Rg, which consists of the cDNA coding for the entire extracellular region of CD147 fused to the DNA coding for the hinge region, CH2 and CH3 domain of human IgG1

Reconstitution & Storage

Short term 4°C, long term aliquot and store at -20°C, avoid freeze thaw cycles.

Precautions

Basigin / Emmprin / CD147 Antibody (clone MEM-M6/2) is for research use only and not for use in diagnostic or therapeutic procedures.

Basigin / Emmprin / CD147 Antibody (clone MEM-M6/2) - Protein Information

Name BSG ([HGNC:1116](#))

Function

[Isoform 1]: Essential for normal retinal maturation and development (By similarity). Acts as a retinal cell surface receptor for NXNL1 and plays an important role in NXNL1-mediated survival of retinal cone photoreceptors (PubMed: [25957687](http://www.uniprot.org/citations/25957687) target="_blank">25957687). In association with glucose transporter SLC16A1/GLUT1 and NXNL1, promotes retinal cone survival by enhancing aerobic glycolysis and accelerating the entry of glucose into photoreceptors (PubMed: [25957687](http://www.uniprot.org/citations/25957687) target="_blank">25957687). May act as a potent stimulator of IL6 secretion in multiple cell lines that include monocytes (PubMed: [21620857](http://www.uniprot.org/citations/21620857) target="_blank">21620857).

Cellular Location

Melanosome. Note=Identified by mass spectrometry in melanosome fractions from stage I to stage IV. [Isoform 2]: Cell membrane; Single-pass type I membrane protein {ECO:0000250|UniProtKB:P26453}. Endosome Endoplasmic reticulum membrane; Single-pass type I membrane protein {ECO:0000250|UniProtKB:P26453} Basolateral cell membrane; Single-pass type I membrane protein {ECO:0000250|UniProtKB:P26453} [Isoform 4]: Cell membrane; Single-pass type I membrane protein {ECO:0000250|UniProtKB:P26453}

Tissue Location

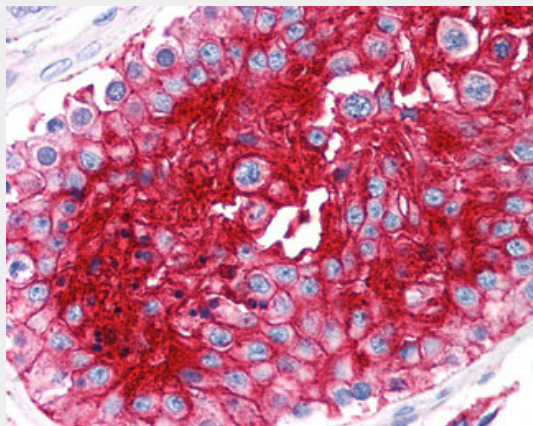
[Isoform 1]: Retina-specific (PubMed:25957687). Expressed in retinal cone photoreceptors (at protein level) (PubMed:25957687). [Isoform 3]: Highly expressed in the bone marrow, fetal liver, lung, testis and thymus.

Basigin / Emmprin / CD147 Antibody (clone MEM-M6/2) - Protocols

Provided below are standard protocols that you may find useful for product applications.

- [Western Blot](#)
- [Blocking Peptides](#)
- [Dot Blot](#)
- [Immunohistochemistry](#)
- [Immunofluorescence](#)
- [Immunoprecipitation](#)
- [Flow Cytometry](#)
- [Cell Culture](#)

Basigin / Emmprin / CD147 Antibody (clone MEM-M6/2) - Images



Anti-CD147 antibody IHC of human testis.

Basigin / Emmprin / CD147 Antibody (clone MEM-M6/2) - Background

Plays an important role in targeting the monocarboxylate transporters SLC16A1, SLC16A3 and SLC16A8 to the plasma membrane. Plays pivotal roles in spermatogenesis, embryo implantation, neural network formation and tumor progression. Stimulates adjacent fibroblasts to produce matrix metalloproteinases (MMPs). Seems to be a receptor for oligomannosidic glycans. In vitro, promotes outgrowth of astrocytic processes.

Basigin / Emmprin / CD147 Antibody (clone MEM-M6/2) - References

Kasinrerk W., et al. J. Immunol. 149:847-854(1992).

Miyauchi T.,et al.J. Biochem. 110:770-774(1991).

Biswas C.,et al.Cancer Res. 55:434-439(1995).

Wakasugi H.,et al.Submitted (MAR-1996) to the EMBL/GenBank/DDBJ databases.

Decastro R.,et al.Submitted (MAR-1996) to the EMBL/GenBank/DDBJ databases.