

**CD34 Antibody (clone 4H11[APG])**  
**Mouse Monoclonal Antibody**  
**Catalog # ALS11978**

**Specification**

---

**CD34 Antibody (clone 4H11[APG]) - Product Information**

Application	IHC
Primary Accession	<a href="#">P28906</a>
Reactivity	Human
Host	Mouse
Clonality	Monoclonal
Calculated MW	41kDa KDa

**CD34 Antibody (clone 4H11[APG]) - Additional Information**

**Gene ID** 947

**Other Names**

Hematopoietic progenitor cell antigen CD34, CD34, CD34

**Target/Specificity**

Permanent human cell line derived from peripheral leucocytes of a patient suffering from chronic myeloid leukaemia

**Reconstitution & Storage**

Short term 4°C, long term aliquot and store at -20°C, avoid freeze thaw cycles.

**Precautions**

CD34 Antibody (clone 4H11[APG]) is for research use only and not for use in diagnostic or therapeutic procedures.

**CD34 Antibody (clone 4H11[APG]) - Protein Information**

**Name** CD34

**Function**

Possible adhesion molecule with a role in early hematopoiesis by mediating the attachment of stem cells to the bone marrow extracellular matrix or directly to stromal cells. Could act as a scaffold for the attachment of lineage specific glycans, allowing stem cells to bind to lectins expressed by stromal cells or other marrow components. Presents carbohydrate ligands to selectins.

**Cellular Location**

Membrane; Single-pass type I membrane protein.

**Tissue Location**

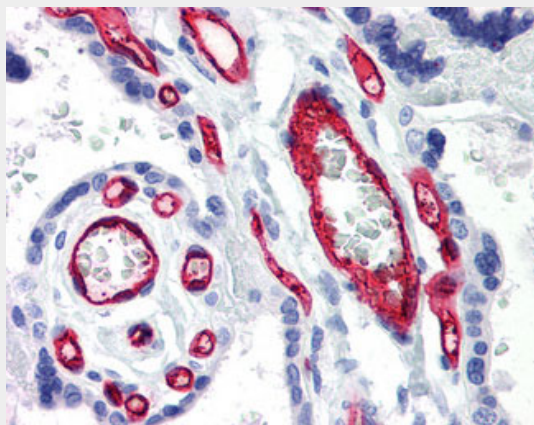
Selectively expressed on hematopoietic progenitor cells and the small vessel endothelium of a variety of tissues

## CD34 Antibody (clone 4H11[APG]) - Protocols

Provided below are standard protocols that you may find useful for product applications.

- [Western Blot](#)
- [Blocking Peptides](#)
- [Dot Blot](#)
- [Immunohistochemistry](#)
- [Immunofluorescence](#)
- [Immunoprecipitation](#)
- [Flow Cytometry](#)
- [Cell Culture](#)

## CD34 Antibody (clone 4H11[APG]) - Images



Anti-CD34 antibody IHC of human placenta.

## CD34 Antibody (clone 4H11[APG]) - Background

Possible adhesion molecule with a role in early hematopoiesis by mediating the attachment of stem cells to the bone marrow extracellular matrix or directly to stromal cells. Could act as a scaffold for the attachment of lineage specific glycans, allowing stem cells to bind to lectins expressed by stromal cells or other marrow components. Presents carbohydrate ligands to selectins.

## CD34 Antibody (clone 4H11[APG]) - References

- Simmons D.L., et al. *J. Immunol.* 148:267-271(1992).  
Satterthwaite A.B., et al. *Genomics* 12:788-794(1992).  
Nakamura Y., et al. *Exp. Hematol.* 21:236-242(1993).  
Freund D., et al. Submitted (JUN-2002) to the EMBL/GenBank/DDBJ databases.  
Ota T., et al. *Nat. Genet.* 36:40-45(2004).