

**CD59 Antibody (clone MEM-43/5)**  
**Mouse Monoclonal Antibody**  
**Catalog # ALS11974**

**Specification**

---

**CD59 Antibody (clone MEM-43/5) - Product Information**

Application	IHC
Primary Accession	<a href="#">P13987</a>
Reactivity	Human, Mouse
Host	Mouse
Clonality	Monoclonal
Calculated MW	14kDa KDa

**CD59 Antibody (clone MEM-43/5) - Additional Information**

**Gene ID** 966

**Other Names**

CD59 glycoprotein, 1F5 antigen, 20 kDa homologous restriction factor, HRF-20, HRF20, MAC-inhibitory protein, MAC-IP, MEM43 antigen, Membrane attack complex inhibition factor, MACIF, Membrane inhibitor of reactive lysis, MIRL, Protectin, CD59, CD59, MIC11, MIN1, MIN2, MIN3, MSK21

**Target/Specificity**

Thymocytes and T lymphocytes

**Reconstitution & Storage**

Short term 4°C, long term aliquot and store at -20°C, avoid freeze thaw cycles.

**Precautions**

CD59 Antibody (clone MEM-43/5) is for research use only and not for use in diagnostic or therapeutic procedures.

**CD59 Antibody (clone MEM-43/5) - Protein Information**

**Name** CD59

**Synonyms** MIC11, MIN1, MIN2, MIN3, MSK21

**Function**

Potent inhibitor of the complement membrane attack complex (MAC) action. Acts by binding to the C8 and/or C9 complements of the assembling MAC, thereby preventing incorporation of the multiple copies of C9 required for complete formation of the osmolytic pore. This inhibitor appears to be species-specific. Involved in signal transduction for T-cell activation complexed to a protein tyrosine kinase.

**Cellular Location**

Cell membrane; Lipid-anchor, GPI-anchor. Secreted. Note=Soluble form found in a number of

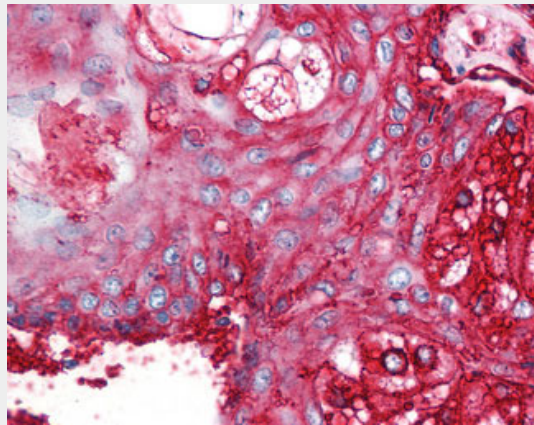
tissues

### **CD59 Antibody (clone MEM-43/5) - Protocols**

Provided below are standard protocols that you may find useful for product applications.

- [Western Blot](#)
- [Blocking Peptides](#)
- [Dot Blot](#)
- [Immunohistochemistry](#)
- [Immunofluorescence](#)
- [Immunoprecipitation](#)
- [Flow Cytometry](#)
- [Cell Culture](#)

### **CD59 Antibody (clone MEM-43/5) - Images**



Anti-CD59 antibody IHC of human skin, pilosebaceous unit.

### **CD59 Antibody (clone MEM-43/5) - Background**

Potent inhibitor of the complement membrane attack complex (MAC) action. Acts by binding to the C8 and/or C9 complements of the assembling MAC, thereby preventing incorporation of the multiple copies of C9 required for complete formation of the osmolytic pore. This inhibitor appears to be species-specific. Involved in signal transduction for T-cell activation complexed to a protein tyrosine kinase.

### **CD59 Antibody (clone MEM-43/5) - References**

- Davies A., et al. *J. Exp. Med.* 170:637-654(1989).  
Philbrick W.M., et al. *Eur. J. Immunol.* 20:87-92(1990).  
Okada H., et al. *Biochem. Biophys. Res. Commun.* 162:1553-1559(1989).  
Sugita Y., et al. *J. Biochem.* 106:555-557(1989).  
Sawada R., et al. *DNA Cell Biol.* 9:213-220(1990).