

CD59 Antibody (clone MEM-43)
Mouse Monoclonal Antibody
Catalog # ALS11973**Specification**

CD59 Antibody (clone MEM-43) - Product Information

Application	IHC
Primary Accession	P13987
Reactivity	Human
Host	Mouse
Clonality	Monoclonal
Calculated MW	14kDa KDa

CD59 Antibody (clone MEM-43) - Additional Information**Gene ID** 966**Other Names**

CD59 glycoprotein, 1F5 antigen, 20 kDa homologous restriction factor, HRF-20, HRF20, MAC-inhibitory protein, MAC-IP, MEM43 antigen, Membrane attack complex inhibition factor, MACIF, Membrane inhibitor of reactive lysis, MIRL, Protectin, CD59, CD59, MIC11, MIN1, MIN2, MIN3, MSK21

Target/Specificity

Thymocytes and T lymphocytes

Reconstitution & Storage

Short term 4°C, long term aliquot and store at -20°C, avoid freeze thaw cycles.

Precautions

CD59 Antibody (clone MEM-43) is for research use only and not for use in diagnostic or therapeutic procedures.

CD59 Antibody (clone MEM-43) - Protein Information**Name** CD59**Synonyms** MIC11, MIN1, MIN2, MIN3, MSK21**Function**

Potent inhibitor of the complement membrane attack complex (MAC) action. Acts by binding to the C8 and/or C9 complements of the assembling MAC, thereby preventing incorporation of the multiple copies of C9 required for complete formation of the osmolytic pore. This inhibitor appears to be species-specific. Involved in signal transduction for T-cell activation complexed to a protein tyrosine kinase.

Cellular Location

Cell membrane; Lipid-anchor, GPI-anchor. Secreted. Note=Soluble form found in a number of

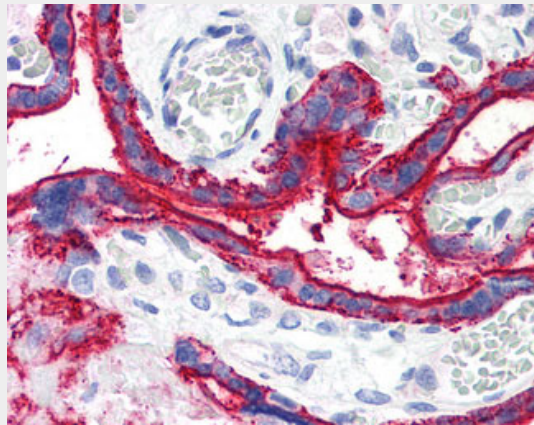
tissues

CD59 Antibody (clone MEM-43) - Protocols

Provided below are standard protocols that you may find useful for product applications.

- [Western Blot](#)
- [Blocking Peptides](#)
- [Dot Blot](#)
- [Immunohistochemistry](#)
- [Immunofluorescence](#)
- [Immunoprecipitation](#)
- [Flow Cytometry](#)
- [Cell Culture](#)

CD59 Antibody (clone MEM-43) - Images



Anti-CD59 antibody IHC of human placenta.

CD59 Antibody (clone MEM-43) - Background

Potent inhibitor of the complement membrane attack complex (MAC) action. Acts by binding to the C8 and/or C9 complements of the assembling MAC, thereby preventing incorporation of the multiple copies of C9 required for complete formation of the osmolytic pore. This inhibitor appears to be species-specific. Involved in signal transduction for T-cell activation complexed to a protein tyrosine kinase.

CD59 Antibody (clone MEM-43) - References

- Davies A., et al. *J. Exp. Med.* 170:637-654(1989).
Philbrick W.M., et al. *Eur. J. Immunol.* 20:87-92(1990).
Okada H., et al. *Biochem. Biophys. Res. Commun.* 162:1553-1559(1989).
Sugita Y., et al. *J. Biochem.* 106:555-557(1989).
Sawada R., et al. *DNA Cell Biol.* 9:213-220(1990).