

**CD7 Antibody (clone MEM-186)**  
**Mouse Monoclonal Antibody**  
**Catalog # ALS11970****Specification**

---

**CD7 Antibody (clone MEM-186) - Product Information**

|                   |                        |
|-------------------|------------------------|
| Application       | IHC                    |
| Primary Accession | <a href="#">P09564</a> |
| Reactivity        | Human                  |
| Host              | Mouse                  |
| Clonality         | Monoclonal             |
| Calculated MW     | 25kDa KDa              |

**CD7 Antibody (clone MEM-186) - Additional Information****Gene ID** 924**Other Names**

T-cell antigen CD7, GP40, T-cell leukemia antigen, T-cell surface antigen Leu-9, TP41, CD7, CD7

**Target/Specificity**

Human acute myelogenous leukaemia cell line KG-1

**Reconstitution & Storage**

Short term 4°C, long term aliquot and store at -20°C, avoid freeze thaw cycles.

**Precautions**

CD7 Antibody (clone MEM-186) is for research use only and not for use in diagnostic or therapeutic procedures.

**CD7 Antibody (clone MEM-186) - Protein Information****Name** CD7**Function**

Not yet known.

**Cellular Location**

Membrane; Single-pass type I membrane protein.

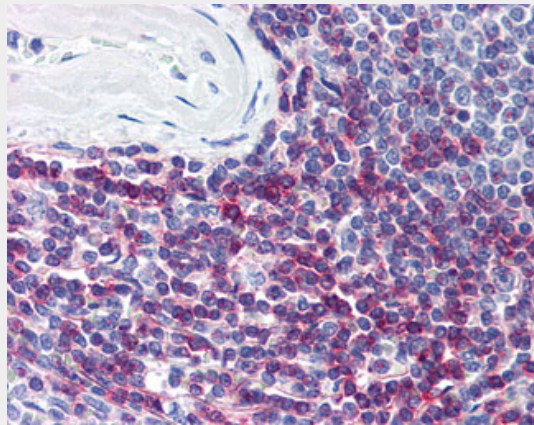
**CD7 Antibody (clone MEM-186) - Protocols**

Provided below are standard protocols that you may find useful for product applications.

- [Western Blot](#)
- [Blocking Peptides](#)

- [Dot Blot](#)
- [Immunohistochemistry](#)
- [Immunofluorescence](#)
- [Immunoprecipitation](#)
- [Flow Cytometry](#)
- [Cell Culture](#)

#### **CD7 Antibody (clone MEM-186) - Images**



Anti-CD7 antibody IHC of human spleen.

#### **CD7 Antibody (clone MEM-186) - Background**

Not yet known.

#### **CD7 Antibody (clone MEM-186) - References**

- Aruffo A., et al. EMBO J. 6:3313-3316(1987).  
Schanberg L.E., et al. Proc. Natl. Acad. Sci. U.S.A. 88:603-607(1991).  
Kalnina N., et al. Submitted (MAY-2003) to the EMBL/GenBank/DDBJ databases.  
Yoshikawa K., et al. Immunogenetics 33:352-360(1991).  
Ware R.E., et al. J. Immunol. 143:3632-3640(1989).