

KRT8 / CK8 / Cytokeratin 8 Antibody (clone C-43)
Mouse Monoclonal Antibody
Catalog # ALS11968**Specification**

KRT8 / CK8 / Cytokeratin 8 Antibody (clone C-43) - Product Information

Application	IHC
Primary Accession	P05787
Reactivity	Human, Rabbit, Pig, Sheep, Bovine
Host	Mouse
Clonality	Monoclonal
Calculated MW	54kDa KDa

KRT8 / CK8 / Cytokeratin 8 Antibody (clone C-43) - Additional Information**Gene ID** 3856**Other Names**

Keratin, type II cytoskeletal 8, Cytokeratin-8, CK-8, Keratin-8, K8, Type-II keratin Kb8, KRT8, CYK8

Target/Specificity

Cytoskeleton preparation from HeLa human cervix carcinoma cell line

Reconstitution & Storage

Short term 4°C, long term aliquot and store at -20°C, avoid freeze thaw cycles.

Precautions

KRT8 / CK8 / Cytokeratin 8 Antibody (clone C-43) is for research use only and not for use in diagnostic or therapeutic procedures.

KRT8 / CK8 / Cytokeratin 8 Antibody (clone C-43) - Protein Information**Name** KRT8**Synonyms** CYK8**Function**

Together with KRT19, helps to link the contractile apparatus to dystrophin at the costameres of striated muscle.

Cellular Location

Cytoplasm. Nucleus, nucleoplasm {ECO:0000250|UniProtKB:Q10758}. Nucleus matrix {ECO:0000250|UniProtKB:Q10758}

Tissue Location

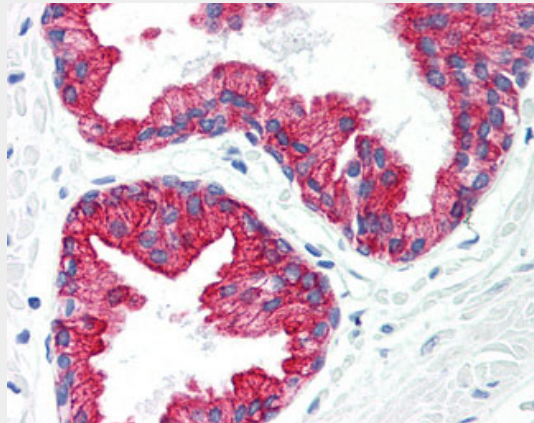
Observed in muscle fibers accumulating in the costameres of myoplasm at the sarcolemma membrane in structures that contain dystrophin and spectrin. Expressed in gingival mucosa and hard palate of the oral cavity.

KRT8 / CK8 / Cytokeratin 8 Antibody (clone C-43) - Protocols

Provided below are standard protocols that you may find useful for product applications.

- [Western Blot](#)
- [Blocking Peptides](#)
- [Dot Blot](#)
- [Immunohistochemistry](#)
- [Immunofluorescence](#)
- [Immunoprecipitation](#)
- [Flow Cytometry](#)
- [Cell Culture](#)

KRT8 / CK8 / Cytokeratin 8 Antibody (clone C-43) - Images



Anti-KRT8 / Cytokeratin 8 antibody IHC of human prostate.

KRT8 / CK8 / Cytokeratin 8 Antibody (clone C-43) - Background

Together with KRT19, helps to link the contractile apparatus to dystrophin at the costameres of striated muscle.

KRT8 / CK8 / Cytokeratin 8 Antibody (clone C-43) - References

- Krauss S., et al. *Gene* 86:241-249(1990).
Yamamoto R., et al. *Mol. Endocrinol.* 4:370-374(1990).
Waseem A., et al. *New Biol.* 2:464-478(1990).
Ku N.-O., et al. *J. Biol. Chem.* 272:7556-7564(1997).
Ota T., et al. *Nat. Genet.* 36:40-45(2004).