

CD5 Antibody (clone MEM-32)
Mouse Monoclonal Antibody
Catalog # ALS11967**Specification**

CD5 Antibody (clone MEM-32) - Product Information

Application	IHC
Primary Accession	P06127
Reactivity	Human
Host	Mouse
Clonality	Monoclonal
Calculated MW	55kDa KDa

CD5 Antibody (clone MEM-32) - Additional Information**Gene ID** 921**Other Names**

T-cell surface glycoprotein CD5, Lymphocyte antigen T1/Leu-1, CD5, CD5, LEU1

Target/Specificity

Crude thymus membrane fraction

Reconstitution & Storage

Short term 4°C, long term aliquot and store at -20°C, avoid freeze thaw cycles.

Precautions

CD5 Antibody (clone MEM-32) is for research use only and not for use in diagnostic or therapeutic procedures.

CD5 Antibody (clone MEM-32) - Protein Information**Name** CD5**Synonyms** LEU1**Function**

Lymphoid-specific receptor expressed by all T-cells and in a subset of B-cells known as B1a cells. Plays a role in the regulation of TCR and BCR signaling, thymocyte selection, T-cell effector differentiation and immune tolerance. Acts by interacting with several ligands expressed on B-cells such as CD5L or CD72 and thereby plays an important role in contact-mediated, T-dependent B-cell activation and in the maintenance of regulatory T and B-cell homeostasis. Functions as a negative regulator of TCR signaling during thymocyte development by associating with several signaling proteins including LCK, CD3Z chain, PI3K or CBL (PubMed:1385158, PubMed:1384049).

Mechanistically, co- engagement of CD3 with CD5 enhances phosphorylated CBL recruitment leading to increased VAV1 phosphorylation and degradation (PubMed:1384049).

[23376399](http://www.uniprot.org/citations/23376399)). Modulates B-cell biology through ERK1/2 activation in a Ca(2+)-dependent pathway via the non-selective Ca(2+) channel TRPC1, leading to IL-10 production (PubMed:<[27499044](http://www.uniprot.org/citations/27499044)>).

Cellular Location

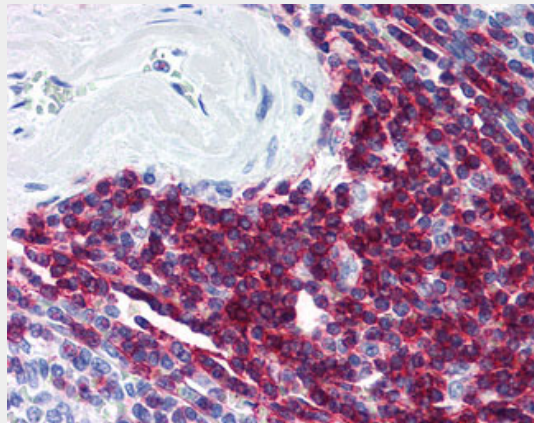
Cell membrane {ECO:0000250|UniProtKB:P13379}; Single-pass type I membrane protein {ECO:0000250|UniProtKB:P13379}

CD5 Antibody (clone MEM-32) - Protocols

Provided below are standard protocols that you may find useful for product applications.

- [Western Blot](#)
- [Blocking Peptides](#)
- [Dot Blot](#)
- [Immunohistochemistry](#)
- [Immunofluorescence](#)
- [Immunoprecipitation](#)
- [Flow Cytometry](#)
- [Cell Culture](#)

CD5 Antibody (clone MEM-32) - Images



Anti-CD5 antibody IHC of human spleen.

CD5 Antibody (clone MEM-32) - Background

May act as a receptor in regulating T-cell proliferation.

CD5 Antibody (clone MEM-32) - References

Jones N.H., et al. Nature 323:346-349(1986).
Calvo J., et al. Tissue Antigens 47:257-261(1996).
Livingston R.J., et al. Submitted (OCT-2006) to the EMBL/GenBank/DDBJ databases.
Ota T., et al. Nat. Genet. 36:40-45(2004).
Taylor T.D., et al. Nature 440:497-500(2006).