

ACHE / Acetylcholinesterase Antibody (N-Terminus)
Rabbit Polyclonal Antibody
Catalog # ALS11947

Specification

ACHE / Acetylcholinesterase Antibody (N-Terminus) - Product Information

Application	IHC
Primary Accession	P22303
Reactivity	Human
Host	Rabbit
Clonality	Polyclonal
Calculated MW	68kDa KDa

ACHE / Acetylcholinesterase Antibody (N-Terminus) - Additional Information

Gene ID 43

Other Names

Acetylcholinesterase, AChE, 3.1.1.7, ACHE

Target/Specificity

synthetic peptide corresponding to N-terminal residues of human ACHE (N-terminal extended acetylcholinesterase)

Reconstitution & Storage

+4°C or -20°C, Avoid repeated freezing and thawing.

Precautions

ACHE / Acetylcholinesterase Antibody (N-Terminus) is for research use only and not for use in diagnostic or therapeutic procedures.

ACHE / Acetylcholinesterase Antibody (N-Terminus) - Protein Information

Name ACHE ([HGNC:108](#))

Function

Hydrolyzes rapidly the acetylcholine neurotransmitter released into the synaptic cleft allowing to terminate the signal transduction at the neuromuscular junction. Role in neuronal apoptosis.

Cellular Location

Synapse. Secreted. Cell membrane; Peripheral membrane protein [Isoform H]: Cell membrane; Lipid- anchor, GPI-anchor; Extracellular side

Tissue Location

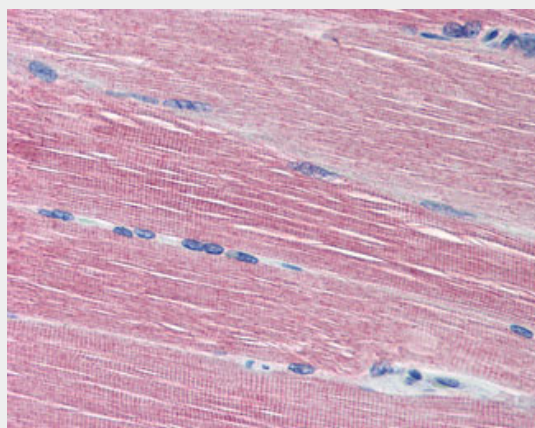
Isoform H is highly expressed in erythrocytes.

ACHE / Acetylcholinesterase Antibody (N-Terminus) - Protocols

Provided below are standard protocols that you may find useful for product applications.

- [Western Blot](#)
- [Blocking Peptides](#)
- [Dot Blot](#)
- [Immunohistochemistry](#)
- [Immunofluorescence](#)
- [Immunoprecipitation](#)
- [Flow Cytometry](#)
- [Cell Culture](#)

ACHE / Acetylcholinesterase Antibody (N-Terminus) - Images



Anti-Acetylcholinesterase antibody IHC of human skeletal muscle.

ACHE / Acetylcholinesterase Antibody (N-Terminus) - Background

Terminates signal transduction at the neuromuscular junction by rapid hydrolysis of the acetylcholine released into the synaptic cleft. Role in neuronal apoptosis.

ACHE / Acetylcholinesterase Antibody (N-Terminus) - References

- Soreq H., et al. Proc. Natl. Acad. Sci. U.S.A. 87:9688-9692(1990).
Karpel R., et al. Exp. Cell Res. 210:268-277(1994).
Yang L., et al. Submitted (JAN-2001) to the EMBL/GenBank/DDBJ databases.
Ota T., et al. Nat. Genet. 36:40-45(2004).
Totoki Y., et al. Submitted (APR-2005) to the EMBL/GenBank/DDBJ databases.