

**BRAF / B-Raf Antibody (phospho-Thr598/Ser601)**  
**Rabbit Polyclonal Antibody**  
**Catalog # ALS11819****Specification**

---

**BRAF / B-Raf Antibody (phospho-Thr598/Ser601) - Product Information**

Application	ICC, IHC
Primary Accession	<a href="#">P15056</a>
Reactivity	Human
Host	Rabbit
Clonality	Polyclonal
Calculated MW	84kDa KDa

**BRAF / B-Raf Antibody (phospho-Thr598/Ser601) - Additional Information****Gene ID** 673**Other Names**

Serine/threonine-protein kinase B-raf, 2.7.11.1, Proto-oncogene B-Raf, p94, v-Raf murine sarcoma viral oncogene homolog B1, BRAF, BRAF1, RAFB1

**Target/Specificity**

Modified peptide

**Reconstitution & Storage**

Aliquot and store at -20°C. Minimize freezing and thawing.

**Precautions**

BRAF / B-Raf Antibody (phospho-Thr598/Ser601) is for research use only and not for use in diagnostic or therapeutic procedures.

**BRAF / B-Raf Antibody (phospho-Thr598/Ser601) - Protein Information****Name** BRAF ([HGNC:1097](#))**Synonyms** BRAF1, RAFB1**Function**

Protein kinase involved in the transduction of mitogenic signals from the cell membrane to the nucleus (Probable). Phosphorylates MAP2K1, and thereby activates the MAP kinase signal transduction pathway (PubMed:[21441910](http://www.uniprot.org/citations/21441910), PubMed:[29433126](http://www.uniprot.org/citations/29433126)). Phosphorylates PFKFB2 (PubMed:[36402789](http://www.uniprot.org/citations/36402789)). May play a role in the postsynaptic responses of hippocampal neurons (PubMed:[1508179](http://www.uniprot.org/citations/1508179)).

**Cellular Location**

Nucleus. Cytoplasm. Cell membrane. Note=Colocalizes with RGS14 and RAF1 in both the cytoplasm and membranes.

**Tissue Location**

Brain and testis.

**Volume**

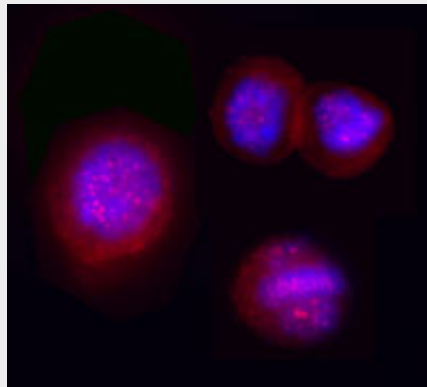
50  $\mu$ l

**BRAF / B-Raf Antibody (phospho-Thr598/Ser601) - Protocols**

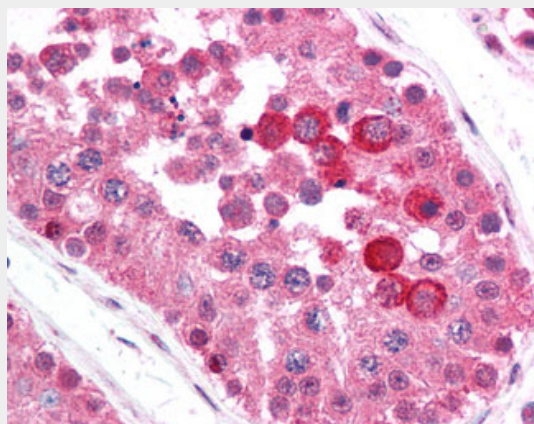
Provided below are standard protocols that you may find useful for product applications.

- [Western Blot](#)
- [Blocking Peptides](#)
- [Dot Blot](#)
- [Immunohistochemistry](#)
- [Immunofluorescence](#)
- [Immunoprecipitation](#)
- [Flow Cytometry](#)
- [Cell Culture](#)

**BRAF / B-Raf Antibody (phospho-Thr598/Ser601) - Images**



Overnight nocodazole treated Hela cells stained with purified rabbit polyclonal antibody against...



Anti-BRAF antibody IHC of human testis.

**BRAF / B-Raf Antibody (phospho-Thr598/Ser601) - Background**

Protein kinase involved in the transduction of mitogenic signals from the cell membrane to the nucleus. May play a role in the postsynaptic responses of hippocampal neuron. Phosphorylates MAP2K1, and thereby contributes to the MAP kinase signal transduction pathway.

**BRAF / B-Raf Antibody (phospho-Thr598/Ser601) - References**

Stephens R.M.,et al.Mol. Cell. Biol. 12:3733-3742(1992).  
Albert S.,et al.Submitted (JAN-2004) to the EMBL/GenBank/DDBJ databases.  
Scherer S.W.,et al.Science 300:767-772(2003).  
Hillier L.W.,et al.Nature 424:157-164(2003).  
Eychene A.,et al.Oncogene 7:1657-1660(1992).