

SLC45A3 / Prostein Antibody
Rabbit Polyclonal Antibody
Catalog # ALS11816**Specification**

SLC45A3 / Prostein Antibody - Product Information

Application	IHC
Primary Accession	O96JT2
Reactivity	Human, Mouse, Rat, Rabbit, Hamster, Monkey, Chicken, Bovine, Dog
Host	Rabbit
Clonality	Polyclonal
Calculated MW	59kDa KDa

SLC45A3 / Prostein Antibody - Additional Information**Gene ID** 85414**Other Names**

Solute carrier family 45 member 3, Prostate cancer-associated protein 6, Prostein, SLC45A3, PCANAP6, PRST

Target/Specificity

N terminal sequence ITYVPPLLLEVGVEE and the C terminal sequence FATQVVFDKSDLAKYSA of the human Prostein protein

Reconstitution & Storage

Store at +2-8 C for 3 months, -20 C for longer periods. Stable for 1 year, Avoid repeated freeze-thaw cycles

Precautions

SLC45A3 / Prostein Antibody is for research use only and not for use in diagnostic or therapeutic procedures.

SLC45A3 / Prostein Antibody - Protein Information**Name** SLC45A3 ([HGNC:8642](#))**Synonyms** PCANAP6, PRST**Function**

Proton-associated sucrose transporter. May be able to transport also glucose and fructose.

Cellular Location

Membrane; Multi-pass membrane protein

Tissue Location

Prostate specific. Expressed in all prostatic glandular cells. Expressed both in normal and

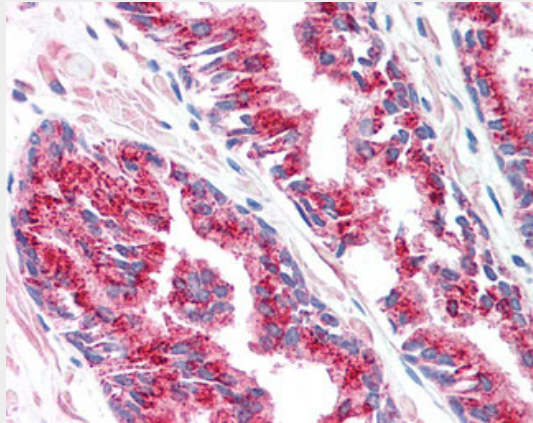
cancerous prostates

SLC45A3 / Prostein Antibody - Protocols

Provided below are standard protocols that you may find useful for product applications.

- [Western Blot](#)
- [Blocking Peptides](#)
- [Dot Blot](#)
- [Immunohistochemistry](#)
- [Immunofluorescence](#)
- [Immunoprecipitation](#)
- [Flow Cytometry](#)
- [Cell Culture](#)

SLC45A3 / Prostein Antibody - Images



Anti-SLC45A3 / Prostein antibody IHC of human prostate.

SLC45A3 / Prostein Antibody - References

- Xu J., et al. *Cancer Res.* 61:1563-1568(2001).
Mural R.J., et al. Submitted (JUL-2005) to the EMBL/GenBank/DDBJ databases.
Ota T., et al. *Nat. Genet.* 36:40-45(2004).
Kiessling A., et al. *Br. J. Cancer* 90:1034-1040(2004).