

TS / Thymidylate Synthase Antibody
Sheep Polyclonal Antibody
Catalog # ALS11757**Specification**

TS / Thymidylate Synthase Antibody - Product Information

Application	WB, IHC
Primary Accession	P04818
Reactivity	Human
Host	Sheep
Clonality	Polyclonal
Calculated MW	36kDa KDa

TS / Thymidylate Synthase Antibody - Additional Information**Gene ID** 7298**Other Names**

Thymidylate synthase, TS, TSase, 2.1.1.45, TYMS, TS

Target/Specificity

Recombinant human Thymidylate Synthase (36 kD) produced in E. coli.

Reconstitution & Storage

+4°C or -20°C, Avoid repeated freezing and thawing.

Precautions

TS / Thymidylate Synthase Antibody is for research use only and not for use in diagnostic or therapeutic procedures.

TS / Thymidylate Synthase Antibody - Protein Information**Name** TYMS ([HGNC:12441](#))**Synonyms** TS**Function**Catalyzes the reductive methylation of 2'-deoxyuridine 5'- monophosphate (dUMP) to thymidine 5'-monophosphate (dTMP), using the cosubstrate, 5,10- methylenetetrahydrofolate (CH₂H₄folate) as a 1- carbon donor and reductant and contributes to the de novo mitochondrial thymidylate biosynthesis pathway.**Cellular Location**

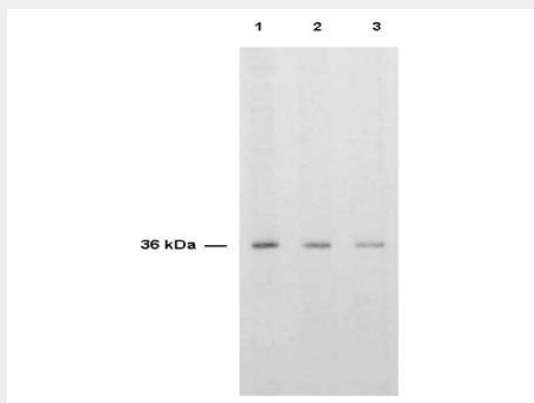
Nucleus. Cytoplasm. Mitochondrion. Mitochondrion matrix. Mitochondrion inner membrane

TS / Thymidylate Synthase Antibody - Protocols

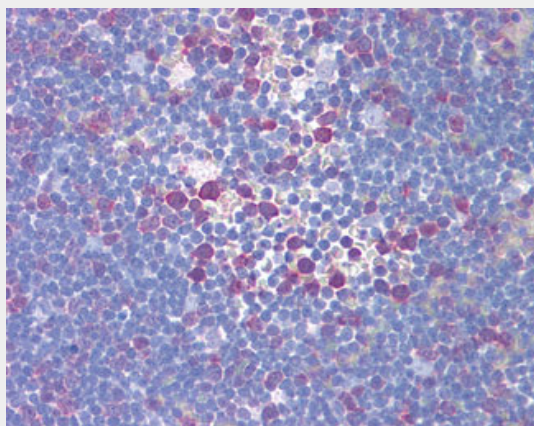
Provided below are standard protocols that you may find useful for product applications.

- [Western Blot](#)
- [Blocking Peptides](#)
- [Dot Blot](#)
- [Immunohistochemistry](#)
- [Immunofluorescence](#)
- [Immunoprecipitation](#)
- [Flow Cytometry](#)
- [Cell Culture](#)

TS / Thymidylate Synthase Antibody - Images



Anti-Thymidylate Synthase Antibody - Western Blot.



Anti-TYMS antibody IHC of human thymus.

TS / Thymidylate Synthase Antibody - Background

Contributes to the de novo mitochondrial thymidylate biosynthesis pathway.

TS / Thymidylate Synthase Antibody - References

- Takeishi K., et al. *Nucleic Acids Res.* 13:2035-2043(1985).
Kaneda S., et al. *J. Biol. Chem.* 265:20277-20284(1990).
Hisatomi H., et al. *Cancer Lett.* 193:127-131(2003).
Shichijo S., et al. Submitted (MAY-2001) to the EMBL/GenBank/DDBJ databases.
Nusbaum C., et al. *Nature* 437:551-555(2005).