

ABCB1 / MDR1 / P Glycoprotein Antibody (aa262-277)
Rabbit Polyclonal Antibody
Catalog # ALS11750**Specification**

ABCB1 / MDR1 / P Glycoprotein Antibody (aa262-277) - Product Information

Application	WB, IHC
Primary Accession	P08183
Reactivity	Human, Mouse, Rat, Monkey, Dog
Host	Rabbit
Clonality	Polyclonal
Calculated MW	141kDa KDa

ABCB1 / MDR1 / P Glycoprotein Antibody (aa262-277) - Additional Information**Gene ID** 5243**Other Names**

Multidrug resistance protein 1, 3.6.3.44, ATP-binding cassette sub-family B member 1, P-glycoprotein 1, CD243, ABCB1, MDR1, PGY1

Target/Specificity

Amino acids 262-277 of human ABCB1 protein.

Reconstitution & Storage

Long term: -20°C; Short term: +4°C. Avoid repeat freeze-thaw cycles.

Precautions

ABCB1 / MDR1 / P Glycoprotein Antibody (aa262-277) is for research use only and not for use in diagnostic or therapeutic procedures.

ABCB1 / MDR1 / P Glycoprotein Antibody (aa262-277) - Protein Information**Name** ABCB1 ([HGNC:40](#))**Synonyms** MDR1, PGY1**Function**Translocates drugs and phospholipids across the membrane (PubMed:[2897240](http://www.uniprot.org/citations/2897240), PubMed:[35970996](http://www.uniprot.org/citations/35970996), PubMed:[8898203](http://www.uniprot.org/citations/8898203), PubMed:[9038218](http://www.uniprot.org/citations/9038218), PubMed:[35507548](http://www.uniprot.org/citations/35507548)). Catalyzes the flop of phospholipids from the cytoplasmic to the exoplasmic leaflet of the apical membrane. Participates mainly to the flop of phosphatidylcholine, phosphatidylethanolamine, beta-D-glucosylceramides and sphingomyelins (PubMed:[8898203](http://www.uniprot.org/citations/8898203)).

Energy-dependent efflux pump responsible for decreased drug accumulation in multidrug-resistant cells (PubMed: [2897240](http://www.uniprot.org/citations/2897240), PubMed: [35970996](http://www.uniprot.org/citations/35970996), PubMed: [9038218](http://www.uniprot.org/citations/9038218)).

Cellular Location

Cell membrane; Multi-pass membrane protein {ECO:0000255|PROSITE-ProRule:PRU00441} Apical cell membrane. Cytoplasm Note=ABCB1 localization is influenced by C1orf115 expression levels (plasma membrane versus cytoplasm). Localized to the apical membrane of enterocytes (PubMed:28408210).

Tissue Location

Expressed in small intestine (PubMed:28408210). Expressed in liver, kidney and brain.

Volume

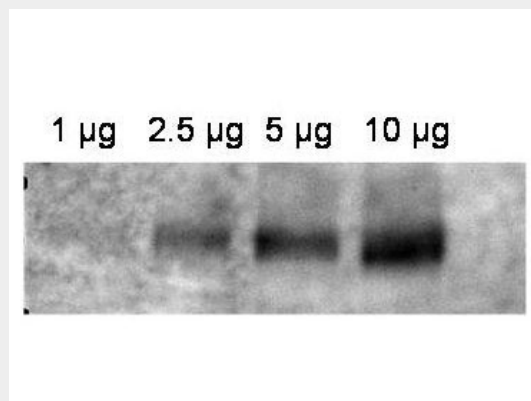
50 μ l

ABCB1 / MDR1 / P Glycoprotein Antibody (aa262-277) - Protocols

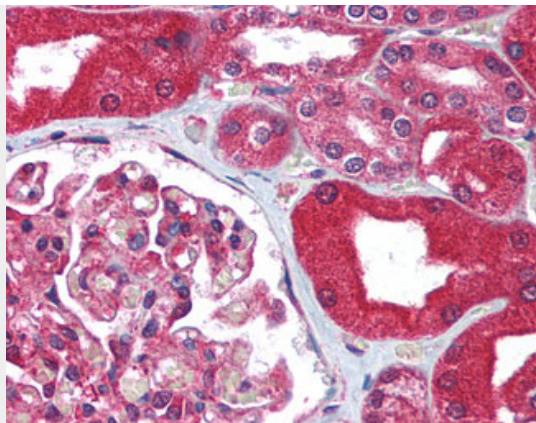
Provided below are standard protocols that you may find useful for product applications.

- [Western Blot](#)
- [Blocking Peptides](#)
- [Dot Blot](#)
- [Immunohistochemistry](#)
- [Immunofluorescence](#)
- [Immunoprecipitation](#)
- [Flow Cytometry](#)
- [Cell Culture](#)

ABCB1 / MDR1 / P Glycoprotein Antibody (aa262-277) - Images



Anti-ABCB1 Antibody - Western Blot.



Anti-MDR1 antibody IHC of human kidney.

ABCB1 / MDR1 / P Glycoprotein Antibody (aa262-277) - Background

Energy-dependent efflux pump responsible for decreased drug accumulation in multidrug-resistant cells.

ABCB1 / MDR1 / P Glycoprotein Antibody (aa262-277) - References

- Chen C.-J., et al. Cell 47:381-389(1986).
- Chen C.-J., et al. J. Biol. Chem. 265:506-514(1990).
- Chen G., et al. J. Biol. Chem. 272:5974-5982(1997).
- Jiang Y., et al. Submitted (JUN-2008) to the EMBL/GenBank/DDBJ databases.
- Ota T., et al. Nat. Genet. 36:40-45(2004).