

STEAP2 Antibody (C-Terminus)
Rabbit Polyclonal Antibody
Catalog # ALS11715

Specification

STEAP2 Antibody (C-Terminus) - Product Information

| | |
|-------------------|------------------------|
| Application | IHC |
| Primary Accession | Q8NFT2 |
| Reactivity | Human, Mouse |
| Host | Rabbit |
| Clonality | Polyclonal |
| Calculated MW | 56kDa KDa |

STEAP2 Antibody (C-Terminus) - Additional Information

Gene ID 261729

Other Names

Metalloreductase STEAP2, 1.16.1.-, Prostate cancer-associated protein 1, Protein up-regulated in metastatic prostate cancer, PUMPCn, Six-transmembrane epithelial antigen of prostate 2, SixTransMembrane protein of prostate 1, STEAP2, PCANAP1, STAMP1

Target/Specificity

a 16 amino acid peptide from near the carboxy terminus of human STEAP2

Reconstitution & Storage

Short term 4°C, long term aliquot and store at -20°C, avoid freeze thaw cycles. Store undiluted.

Precautions

STEAP2 Antibody (C-Terminus) is for research use only and not for use in diagnostic or therapeutic procedures.

STEAP2 Antibody (C-Terminus) - Protein Information

Name STEAP2

Synonyms PCANAP1, STAMP1

Function

Integral membrane protein that functions as a NADPH-dependent ferric-chelate reductase, using NADPH from one side of the membrane to reduce a Fe(3+) chelate that is bound on the other side of the membrane (By similarity). Mediates sequential transmembrane electron transfer from NADPH to FAD and onto heme, and finally to the Fe(3+) chelate (By similarity). Can also reduce Cu(2+) to Cu(1+) (By similarity).

Cellular Location

Endosome membrane {ECO:0000250|UniProtKB:Q8BWB6}; Multi-pass membrane protein. Cell membrane; Multi-pass membrane protein

Tissue Location

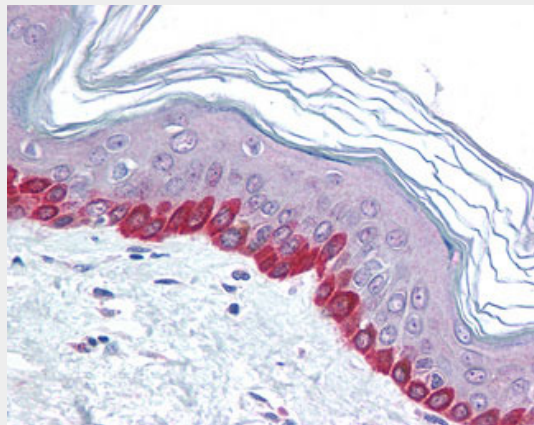
Expressed at high levels in prostate and at significantly lower levels in heart, brain, kidney, pancreas, and ovary.

STEAP2 Antibody (C-Terminus) - Protocols

Provided below are standard protocols that you may find useful for product applications.

- [Western Blot](#)
- [Blocking Peptides](#)
- [Dot Blot](#)
- [Immunohistochemistry](#)
- [Immunofluorescence](#)
- [Immunoprecipitation](#)
- [Flow Cytometry](#)
- [Cell Culture](#)

STEAP2 Antibody (C-Terminus) - Images



Anti-STEAP2 antibody IHC of human skin.

STEAP2 Antibody (C-Terminus) - Background

Metalloreductase that has the ability to reduce both Fe(3+) to Fe(2+) and Cu(2+) to Cu(1+). Uses NAD(+) as acceptor (By similarity).

STEAP2 Antibody (C-Terminus) - References

- Korkmaz K.S., et al. *J. Biol. Chem.* 277:36689-36696(2002).
Porkka K.P., et al. *Lab. Invest.* 82:1573-1582(2002).
Zhang Z., et al. Submitted (JUL-2002) to the EMBL/GenBank/DDBJ databases.
Clark H.F., et al. *Genome Res.* 13:2265-2270(2003).
Hillier L.W., et al. *Nature* 424:157-164(2003).