

PDCD1 / CD279 / PD-1 Antibody (Internal)
Rabbit Polyclonal Antibody
Catalog # ALS11705

Specification

PDCD1 / CD279 / PD-1 Antibody (Internal) - Product Information

Application	IHC
Primary Accession	O15116
Reactivity	Human, Mouse, Rat
Host	Rabbit
Clonality	Polyclonal
Calculated MW	32kDa KDa

PDCD1 / CD279 / PD-1 Antibody (Internal) - Additional Information

Gene ID 5133

Other Names

Programmed cell death protein 1, Protein PD-1, hPD-1, CD279, PDCD1, PD1

Target/Specificity

16 amino acid peptide from near the center of human PDCD1.

Reconstitution & Storage

Short term 4°C, long term aliquot and store at -20°C, avoid freeze thaw cycles. Store undiluted.

Precautions

PDCD1 / CD279 / PD-1 Antibody (Internal) is for research use only and not for use in diagnostic or therapeutic procedures.

PDCD1 / CD279 / PD-1 Antibody (Internal) - Protein Information

Name PDCD1 {ECO:0000303|PubMed:7851902, ECO:0000312|HGNC:HGNC:8760}

Function

Inhibitory receptor on antigen activated T-cells that plays a critical role in induction and maintenance of immune tolerance to self (PubMed:21276005). Delivers inhibitory signals upon binding to ligands CD274/PDCD1L1 and CD273/PDCD1LG2 (PubMed:21276005). Following T-cell receptor (TCR) engagement, PDCD1 associates with CD3-TCR in the immunological synapse and directly inhibits T-cell activation (By similarity). Suppresses T-cell activation through the recruitment of PTPN11/SHP-2: following ligand-binding, PDCD1 is phosphorylated within the ITSM motif, leading to the recruitment of the protein tyrosine phosphatase PTPN11/SHP-2 that mediates dephosphorylation of key TCR proximal signaling molecules, such as ZAP70, PRKCQ/PKCtheta and CD247/CD3zeta (By similarity).

Cellular Location

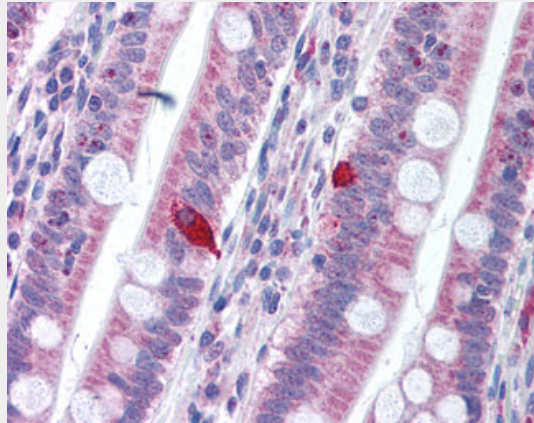
Cell membrane; Single-pass type I membrane protein

PDCD1 / CD279 / PD-1 Antibody (Internal) - Protocols

Provided below are standard protocols that you may find useful for product applications.

- [Western Blot](#)
- [Blocking Peptides](#)
- [Dot Blot](#)
- [Immunohistochemistry](#)
- [Immunofluorescence](#)
- [Immunoprecipitation](#)
- [Flow Cytometry](#)
- [Cell Culture](#)

PDCD1 / CD279 / PD-1 Antibody (Internal) - Images



Anti-PD1 antibody IHC of human small intestine.

PDCD1 / CD279 / PD-1 Antibody (Internal) - Background

Inhibitory cell surface receptor involved in the regulation of T-cell function during immunity and tolerance. Upon ligand binding, inhibits T-cell effector functions in an antigen-specific manner. Possible cell death inducer, in association with other factors.

PDCD1 / CD279 / PD-1 Antibody (Internal) - References

- Shinohara T., et al. *Genomics* 23:704-706(1994).
Finger L.R., et al. *Gene* 197:177-187(1997).
Finger L.R., et al. *Gene* 203:253-253(1997).
Prokunina L., et al. *Nat. Genet.* 32:666-669(2002).
He X., et al. Submitted (FEB-2003) to the EMBL/GenBank/DDBJ databases.