

**MTBP Antibody (aa122-139)**  
**Rabbit Polyclonal Antibody**  
**Catalog # ALS11698**

**Specification**

---

**MTBP Antibody (aa122-139) - Product Information**

Application	IHC
Primary Accession	<a href="#">Q96DY7</a>
Reactivity	Human
Host	Rabbit
Clonality	Polyclonal
Calculated MW	102kDa KDa

**MTBP Antibody (aa122-139) - Additional Information**

**Gene ID** 27085

**Other Names**

Mdm2-binding protein, hMTBP, MTBP

**Target/Specificity**

synthetic peptide (gavcfeeedsnsresls) corresponding to amino acids 122 to 139 of human MTBP, which differ from the mouse sequence by three amino acids ( )

**Reconstitution & Storage**

Short term 4°C, long term aliquot and store at -20°C, avoid freeze thaw cycles. Store undiluted.

**Precautions**

MTBP Antibody (aa122-139) is for research use only and not for use in diagnostic or therapeutic procedures.

**MTBP Antibody (aa122-139) - Protein Information**

**Name** MTBP

**Function**

Inhibits cell migration in vitro and suppresses the invasive behavior of tumor cells (By similarity). May play a role in MDM2- dependent p53/TP53 homeostasis in unstressed cells. Inhibits autoubiquitination of MDM2, thereby enhancing MDM2 stability. This promotes MDM2-mediated ubiquitination of p53/TP53 and its subsequent degradation.

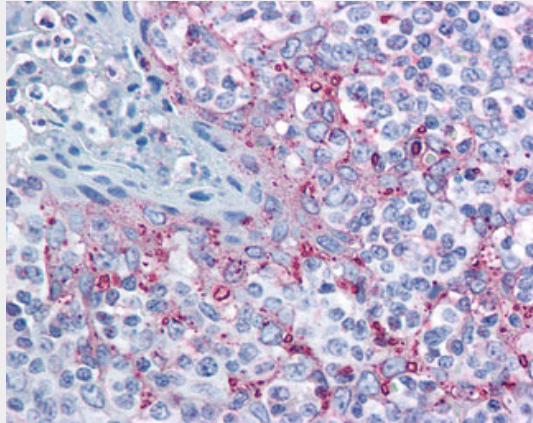
**MTBP Antibody (aa122-139) - Protocols**

Provided below are standard protocols that you may find useful for product applications.

- [Western Blot](#)

- [Blocking Peptides](#)
- [Dot Blot](#)
- [Immunohistochemistry](#)
- [Immunofluorescence](#)
- [Immunoprecipitation](#)
- [Flow Cytometry](#)
- [Cell Culture](#)

#### **MTBP Antibody (aa122-139) - Images**



Anti-MTBP antibody IHC of human tonsil.

#### **MTBP Antibody (aa122-139) - Background**

Inhibits cell migration in vitro and suppresses the invasive behavior of tumor cells (By similarity). May play a role in MDM2-dependent p53/TP53 homeostasis in unstressed cells. Inhibits autoubiquitination of MDM2, thereby enhancing MDM2 stability. This promotes MDM2-mediated ubiquitination of p53/TP53 and its subsequent degradation.

#### **MTBP Antibody (aa122-139) - References**

- Ota T., et al. *Nat. Genet.* 36:40-45(2004).  
Nusbaum C., et al. *Nature* 439:331-335(2006).  
Mural R.J., et al. Submitted (JUL-2005) to the EMBL/GenBank/DDBJ databases.  
Brady M., et al. *Mol. Cell. Biol.* 25:545-553(2005).  
Dephoure N., et al. *Proc. Natl. Acad. Sci. U.S.A.* 105:10762-10767(2008).