

BCL2A1 Antibody (N-Terminus)
Rabbit Polyclonal Antibody
Catalog # ALS11665

Specification

BCL2A1 Antibody (N-Terminus) - Product Information

Application	IHC
Primary Accession	Q16548
Reactivity	Human, Mouse, Rat
Host	Rabbit
Clonality	Polyclonal
Calculated MW	20kDa KDa

BCL2A1 Antibody (N-Terminus) - Additional Information

Gene ID 597

Other Names

Bcl-2-related protein A1, Bcl-2-like protein 5, Bcl2-L-5, Hemopoietic-specific early response protein, Protein BFL-1, Protein GRS, BCL2A1, BCL2L5, BFL1, GRS, HBPA1

Target/Specificity

14 amino acid peptide from near the amino terminus of human Bfl-1

Reconstitution & Storage

Short term 4°C, long term aliquot and store at -20°C, avoid freeze thaw cycles. Store undiluted.

Precautions

BCL2A1 Antibody (N-Terminus) is for research use only and not for use in diagnostic or therapeutic procedures.

BCL2A1 Antibody (N-Terminus) - Protein Information

Name BCL2A1

Synonyms BCL2L5, BFL1, GRS, HBPA1

Function

Retards apoptosis induced by IL-3 deprivation. May function in the response of hemopoietic cells to external signals and in maintaining endothelial survival during infection (By similarity). Can inhibit apoptosis induced by serum starvation in the mammary epithelial cell line HC11 (By similarity).

Cellular Location

Cytoplasm.

Tissue Location

Seems to be restricted to the hematopoietic compartment. Expressed in peripheral blood, spleen,

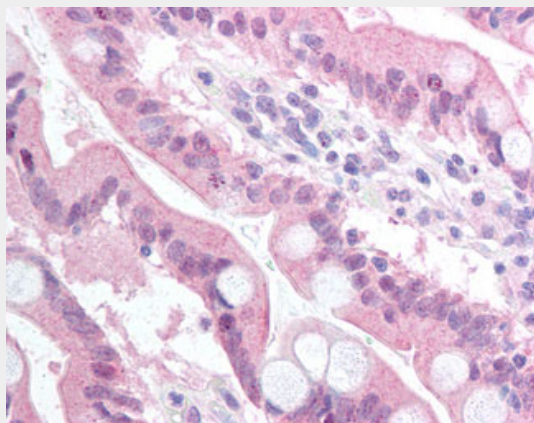
and bone marrow, at moderate levels in lung, small intestine and testis, at a minimal levels in other tissues. Also found in vascular smooth muscle cells and hematopoietic malignancies

BCL2A1 Antibody (N-Terminus) - Protocols

Provided below are standard protocols that you may find useful for product applications.

- [Western Blot](#)
- [Blocking Peptides](#)
- [Dot Blot](#)
- [Immunohistochemistry](#)
- [Immunofluorescence](#)
- [Immunoprecipitation](#)
- [Flow Cytometry](#)
- [Cell Culture](#)

BCL2A1 Antibody (N-Terminus) - Images



Anti-BCL2A1 antibody IHC of human small intestine.

BCL2A1 Antibody (N-Terminus) - Background

Retards apoptosis induced by IL-3 deprivation. May function in the response of hemopoietic cells to external signals and in maintaining endothelial survival during infection (By similarity).

BCL2A1 Antibody (N-Terminus) - References

- Choi S.S., et al. *Oncogene* 11:1693-1698(1995).
Karsan A., et al. *Blood* 87:3089-3096(1996).
Kenny J.J., et al. *Oncogene* 14:997-1001(1997).
Barnes F.A., et al. Submitted (FEB-2003) to the EMBL/GenBank/DDBJ databases.
Kalnine N., et al. Submitted (MAY-2003) to the EMBL/GenBank/DDBJ databases.