

YWHAZ / 14-3-3 Zeta Antibody (Internal)
Rabbit Polyclonal Antibody
Catalog # ALS11648**Specification**

YWHAZ / 14-3-3 Zeta Antibody (Internal) - Product Information

Application	IHC
Primary Accession	P63104
Reactivity	Human, Mouse, Rat
Host	Rabbit
Clonality	Polyclonal
Calculated MW	28kDa KDa

YWHAZ / 14-3-3 Zeta Antibody (Internal) - Additional Information**Gene ID** 7534**Other Names**

14-3-3 protein zeta/delta, Protein kinase C inhibitor protein 1, KCIP-1, YWHAZ

Target/Specificity

Peptide from an internal region of human YWHAZ

Reconstitution & Storage

+4°C, avoid freezing

Precautions

YWHAZ / 14-3-3 Zeta Antibody (Internal) is for research use only and not for use in diagnostic or therapeutic procedures.

YWHAZ / 14-3-3 Zeta Antibody (Internal) - Protein Information**Name** YWHAZ**Function**

Adapter protein implicated in the regulation of a large spectrum of both general and specialized signaling pathways (PubMed: [14578935](http://www.uniprot.org/citations/14578935), PubMed: [15071501](http://www.uniprot.org/citations/15071501), PubMed: [15644438](http://www.uniprot.org/citations/15644438), PubMed: [16376338](http://www.uniprot.org/citations/16376338), PubMed: [16959763](http://www.uniprot.org/citations/16959763), PubMed: [31024343](http://www.uniprot.org/citations/31024343), PubMed: [9360956](http://www.uniprot.org/citations/9360956)). Binds to a large number of partners, usually by recognition of a phosphoserine or phosphothreonine motif (PubMed: [35662396](http://www.uniprot.org/citations/35662396)). Binding generally results in the modulation of the activity of the binding partner (PubMed: [35662396](http://www.uniprot.org/citations/35662396)). Promotes

cytosolic retention and inactivation of TFEB transcription factor by binding to phosphorylated TFEB (PubMed:35662396). Induces ARHGEF7 activity on RAC1 as well as lamellipodia and membrane ruffle formation (PubMed:16959763). In neurons, regulates spine maturation through the modulation of ARHGEF7 activity (By similarity).

Cellular Location

Cytoplasm. Melanosome. Note=Located to stage I to stage IV melanosomes.

Volume

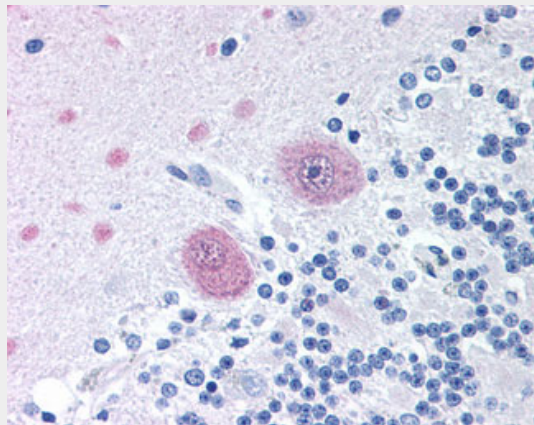
250 µl

YWHAZ / 14-3-3 Zeta Antibody (Internal) - Protocols

Provided below are standard protocols that you may find useful for product applications.

- [Western Blot](#)
- [Blocking Peptides](#)
- [Dot Blot](#)
- [Immunohistochemistry](#)
- [Immunofluorescence](#)
- [Immunoprecipitation](#)
- [Flow Cytometry](#)
- [Cell Culture](#)

YWHAZ / 14-3-3 Zeta Antibody (Internal) - Images



Anti-YWHAZ / 14-3-3 Zeta Delta antibody IHC of human brain, cerebellum.

YWHAZ / 14-3-3 Zeta Antibody (Internal) - Background

Adapter protein implicated in the regulation of a large spectrum of both general and specialized signaling pathways. Binds to a large number of partners, usually by recognition of a phosphoserine or phosphothreonine motif. Binding generally results in the modulation of the activity of the binding partner.

YWHAZ / 14-3-3 Zeta Antibody (Internal) - References

Zupan L.A.,et al.J. Biol. Chem. 267:8707-8710(1992).
Seluja G.A.,et al.Biochim. Biophys. Acta 1395:281-287(1998).
Ota T.,et al.Nat. Genet. 36:40-45(2004).

Mural R.J.,et al.Submitted (JUL-2005) to the EMBL/GenBank/DDBJ databases.
Gevaert K.,et al.Nat. Biotechnol. 21:566-569(2003).