

**MAGEA1 / MAGE 1 Antibody (aa245-259)**  
**Rabbit Polyclonal Antibody**  
**Catalog # ALS11634**

**Specification**

---

**MAGEA1 / MAGE 1 Antibody (aa245-259) - Product Information**

Application	IHC
Primary Accession	<a href="#">P43355</a>
Reactivity	Human
Host	Rabbit
Clonality	Polyclonal
Calculated MW	34kDa KDa

**MAGEA1 / MAGE 1 Antibody (aa245-259) - Additional Information**

**Gene ID** 4100

**Other Names**

Melanoma-associated antigen 1, Antigen MZ2-E, Cancer/testis antigen 1.1, CT1.1, MAGE-1 antigen, MAGEA1, MAGE1, MAGE1A

**Target/Specificity**

Amino acids 245 to 259 of human MAGEA1

**Reconstitution & Storage**

+4°C, avoid freezing

**Precautions**

MAGEA1 / MAGE 1 Antibody (aa245-259) is for research use only and not for use in diagnostic or therapeutic procedures.

**MAGEA1 / MAGE 1 Antibody (aa245-259) - Protein Information**

**Name** MAGEA1

**Synonyms** MAGE1, MAGE1A

**Function**

May be involved in transcriptional regulation through interaction with SNW1 and recruiting histone deacetylase HDAC1. May inhibit notch intracellular domain (NICD) transactivation. May play a role in embryonal development and tumor transformation or aspects of tumor progression. Antigen recognized on a melanoma by autologous cytolytic T-lymphocytes.

**Cellular Location**

Cytoplasm. Nucleus.

**Tissue Location**

Expressed in many tumors of several types, such as melanoma, head and neck squamous cell

carcinoma, lung carcinoma and breast carcinoma, but not in normal tissues except for testes.  
Never expressed in kidney tumors, leukemias and lymphomas

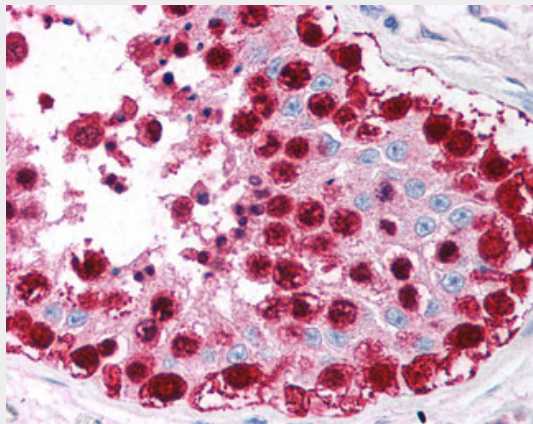
**Volume**  
250  $\mu$ l

### **MAGEA1 / MAGE 1 Antibody (aa245-259) - Protocols**

Provided below are standard protocols that you may find useful for product applications.

- [Western Blot](#)
- [Blocking Peptides](#)
- [Dot Blot](#)
- [Immunohistochemistry](#)
- [Immunofluorescence](#)
- [Immunoprecipitation](#)
- [Flow Cytometry](#)
- [Cell Culture](#)

### **MAGEA1 / MAGE 1 Antibody (aa245-259) - Images**



Anti-MAGEA1 / MAGE 1 antibody IHC of human testis.

### **MAGEA1 / MAGE 1 Antibody (aa245-259) - Background**

May be involved in transcriptional regulation through interaction with SNW1 and recruiting histone deacetylase HDAC1. May inhibit notch intracellular domain (NICD) transactivation. May play a role in embryonal development and tumor transformation or aspects of tumor progression. Antigen recognized on a melanoma by autologous cytolytic T-lymphocytes.

### **MAGEA1 / MAGE 1 Antibody (aa245-259) - References**

van der Bruggen P., et al. *Science* 254:1643-1647(1991).  
Ding M., et al. *Biochem. Biophys. Res. Commun.* 202:549-555(1994).  
Wang L.P., et al. *Zhonghua Gan Zang Bing Za Zhi* 12:151-155(2004).  
Kalnina N., et al. Submitted (AUG-2003) to the EMBL/GenBank/DDBJ databases.  
Ota T., et al. *Nat. Genet.* 36:40-45(2004).