

**SH3GLB1 / Bif / Endophilin B1 Antibody (C-Terminus)**  
**Rabbit Polyclonal Antibody**  
**Catalog # ALS11441****Specification**

---

**SH3GLB1 / Bif / Endophilin B1 Antibody (C-Terminus) - Product Information**

Application	ICC, WB, IHC
Primary Accession	<a href="#">O9Y371</a>
Reactivity	Human, Mouse
Host	Rabbit
Clonality	Polyclonal
Calculated MW	41kDa KDa

**SH3GLB1 / Bif / Endophilin B1 Antibody (C-Terminus) - Additional Information**

**Gene ID** 51100

**Other Names**

Endophilin-B1, Bax-interacting factor 1, Bif-1, SH3 domain-containing GRB2-like protein B1, SH3GLB1, KIAA0491

**Target/Specificity**

15 amino acid peptide from near the carboxy terminus of human BIF

**Reconstitution & Storage**

Short term 4°C, long term aliquot and store at -20°C, avoid freeze thaw cycles. Store undiluted.

**Precautions**

SH3GLB1 / Bif / Endophilin B1 Antibody (C-Terminus) is for research use only and not for use in diagnostic or therapeutic procedures.

**SH3GLB1 / Bif / Endophilin B1 Antibody (C-Terminus) - Protein Information**

**Name** SH3GLB1

**Synonyms** KIAA0491

**Function**

May be required for normal outer mitochondrial membrane dynamics (PubMed:<a href="http://www.uniprot.org/citations/15452144" target="\_blank">15452144</a>). Required for coatomer-mediated retrograde transport in certain cells (By similarity). May recruit other proteins to membranes with high curvature. May promote membrane fusion (PubMed:<a href="http://www.uniprot.org/citations/11604418" target="\_blank">11604418</a>). Involved in activation of caspase-dependent apoptosis by promoting BAX/BAK1 activation (PubMed:<a href="http://www.uniprot.org/citations/16227588" target="\_blank">16227588</a>). Isoform 1 acts proapoptotic in fibroblasts (By similarity). Involved in caspase-independent apoptosis during nutrition starvation and involved in the regulation of autophagy. Activates lipid kinase activity of PIK3C3 during autophagy probably by associating with the PI3K complex II (PI3KC3-C2)

(PubMed:<a href="http://www.uniprot.org/citations/17891140" target="\_blank">17891140</a>). Associated with PI3KC3-C2 during autophagy may regulate the trafficking of ATG9A from the Golgi complex to the peripheral cytoplasm for the formation of autophagosomes by inducing Golgi membrane tubulation and fragmentation (PubMed:<a href="http://www.uniprot.org/citations/21068542" target="\_blank">21068542</a>). Involved in regulation of degradative endocytic trafficking and cytokinesis, probably in the context of PI3KC3-C2 (PubMed:<a href="http://www.uniprot.org/citations/20643123" target="\_blank">20643123</a>). Isoform 2 acts antiapoptotic in neuronal cells; involved in maintenance of mitochondrial morphology and promotes neuronal viability (By similarity).

#### Cellular Location

Cytoplasm. Golgi apparatus membrane; Peripheral membrane protein. Mitochondrion outer membrane; Peripheral membrane protein. Cytoplasmic vesicle, autophagosome membrane. Midbody. Note=Association with the Golgi apparatus depends on the cell type (By similarity). Following starvation colocalizes with ATG5 and LC3 autophagy-related protein(s) on autophagosomal membranes (PubMed:17891140). {ECO:0000250, ECO:0000269|PubMed:17891140}

#### Tissue Location

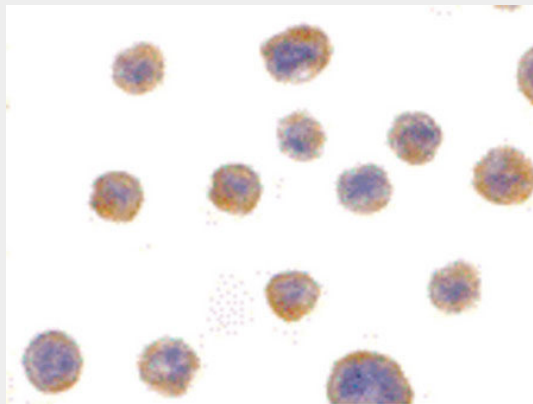
Highly expressed in heart, skeletal muscle, kidney and placenta. Detected at lower levels in brain, colon, thymus, spleen, liver, small intestine, lung and peripheral blood leukocytes

### SH3GLB1 / Bif / Endophilin B1 Antibody (C-Terminus) - Protocols

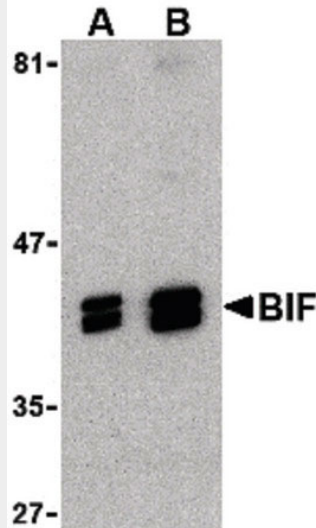
Provided below are standard protocols that you may find useful for product applications.

- [Western Blot](#)
- [Blocking Peptides](#)
- [Dot Blot](#)
- [Immunohistochemistry](#)
- [Immunofluorescence](#)
- [Immunoprecipitation](#)
- [Flow Cytometry](#)
- [Cell Culture](#)

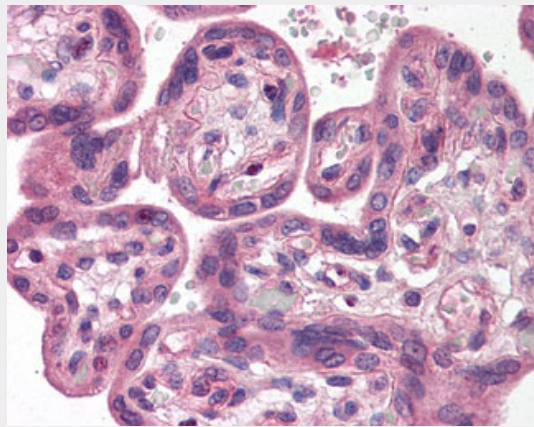
### SH3GLB1 / Bif / Endophilin B1 Antibody (C-Terminus) - Images



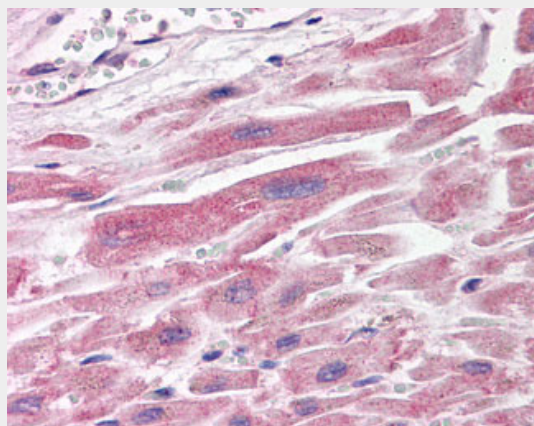
Immunocytochemistry of BIF in HeLa with BIF antibody at 10 ug/ml.



Western blot of BIF in HeLa cell lysate with BIF antibody at (A) 1 and (B) 2 ug/ml.



Anti-SH3GLB1 / Bif-1 antibody IHC of human placenta.



Anti-SH3GLB1 / Bif-1 antibody IHC of human heart.

**SH3GLB1 / Bif / Endophilin B1 Antibody (C-Terminus) - Background**

May be required for normal outer mitochondrial membrane dynamics. Required for coatomer-mediated retrograde transport in certain cells. May recruit other proteins to membranes with high curvature. May promote membrane fusion.

**SH3GLB1 / Bif / Endophilin B1 Antibody (C-Terminus) - References**

Pierrat B., et al. Genomics 71:222-234(2001).  
Cuddeback S.M., et al. J. Biol. Chem. 276:20559-20565(2001).  
Modregger J., et al. J. Biol. Chem. 278:4160-4167(2003).  
Seki N., et al. DNA Res. 4:345-349(1997).  
Lai C.-H., et al. Genome Res. 10:703-713(2000).