

CASP2 / Caspase 2 Antibody (N-Terminus)
Rabbit Polyclonal Antibody
Catalog # ALS11406**Specification**

CASP2 / Caspase 2 Antibody (N-Terminus) - Product Information

Application	ICC, IHC
Primary Accession	P42575
Reactivity	Human, Mouse
Host	Rabbit
Clonality	Polyclonal
Calculated MW	51kDa KDa

CASP2 / Caspase 2 Antibody (N-Terminus) - Additional Information**Gene ID** 835**Other Names**

Caspase-2, CASP-2, 3.4.22.55, Neural precursor cell expressed developmentally down-regulated protein 2, NEDD-2, Protease ICH-1, Caspase-2 subunit p18, Caspase-2 subunit p13, Caspase-2 subunit p12, CASP2, ICH1, NEDD2

Target/Specificity

16 amino acid peptide from the amino-terminus of human Caspase-2

Reconstitution & Storage

Short term 4°C, long term aliquot and store at -20°C, avoid freeze thaw cycles. Store undiluted.

Precautions

CASP2 / Caspase 2 Antibody (N-Terminus) is for research use only and not for use in diagnostic or therapeutic procedures.

CASP2 / Caspase 2 Antibody (N-Terminus) - Protein Information**Name** CASP2**Synonyms** ICH1, NEDD2**Function**

Is a regulator of the cascade of caspases responsible for apoptosis execution (PubMed:8087842, PubMed:11156409, PubMed:15073321). Might function by either activating some proteins required for cell death or inactivating proteins necessary for cell survival (PubMed:15073321). Associates with PIDD1 and CRADD to form the PIDDosome, a complex that activates CASP2 and triggers apoptosis in response to genotoxic stress (PubMed:15073321).

Tissue Location

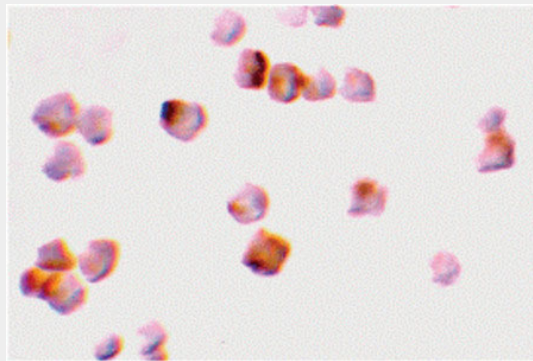
Expressed at higher levels in the embryonic lung, liver and kidney than in the heart and brain. In adults, higher level expression is seen in the placenta, lung, kidney, and pancreas than in the heart, brain, liver and skeletal muscle

CASP2 / Caspase 2 Antibody (N-Terminus) - Protocols

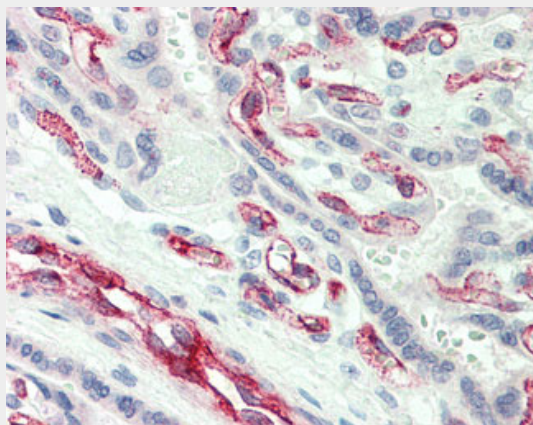
Provided below are standard protocols that you may find useful for product applications.

- [Western Blot](#)
- [Blocking Peptides](#)
- [Dot Blot](#)
- [Immunohistochemistry](#)
- [Immunofluorescence](#)
- [Immunoprecipitation](#)
- [Flow Cytometry](#)
- [Cell Culture](#)

CASP2 / Caspase 2 Antibody (N-Terminus) - Images



Immunocytochemistry of caspase-2 in A-20 cells with caspase-2 antibody at 2 ug/ml.



Anti-CASP2 / Caspase 2 antibody IHC of human placenta.

CASP2 / Caspase 2 Antibody (N-Terminus) - Background

Involved in the activation cascade of caspases responsible for apoptosis execution. Might function by either activating some proteins required for cell death or inactivating proteins necessary for cell survival.

CASP2 / Caspase 2 Antibody (N-Terminus) - References

Wang L.,et al.Cell 78:739-750(1994).

Droin N.,et al.Cancer Res. 60:7039-7047(2000).

Halleck A.,et al.Submitted (JUN-2004) to the EMBL/GenBank/DDBJ databases.

Ota T.,et al.Nat. Genet. 36:40-45(2004).

Hillier L.W.,et al.Nature 424:157-164(2003).