

SPP1 / Osteopontin Antibody (N-Terminus)
Rabbit Polyclonal Antibody
Catalog # ALS11361

Specification

SPP1 / Osteopontin Antibody (N-Terminus) - Product Information

Application	IHC
Primary Accession	P10451
Reactivity	Human, Mouse, Rat, Pig, Dog
Host	Rabbit
Clonality	Polyclonal
Calculated MW	35kDa KDa

SPP1 / Osteopontin Antibody (N-Terminus) - Additional Information

Gene ID 6696

Other Names

Osteopontin, Bone sialoprotein 1, Nephropontin, Secreted phosphoprotein 1, SPP-1, Urinary stone protein, Uropontin, SPP1, BNSP, OPN

Target/Specificity

Synthetic peptide C-K-S-K-K-F-R-R-P-D-I-Q-Y-P-D corresponding to human osteopontin proteins conjugated to KLH using maleimide. A residue of cysteine was added to the amino terminal end to facilitate coupling.

Reconstitution & Storage

Long term: -20°C; Short term: +4°C; Avoid freeze-thaw cycles.

Precautions

SPP1 / Osteopontin Antibody (N-Terminus) is for research use only and not for use in diagnostic or therapeutic procedures.

SPP1 / Osteopontin Antibody (N-Terminus) - Protein Information

Name SPP1

Synonyms BNSP, OPN

Function

Major non-collagenous bone protein that binds tightly to hydroxyapatite. Appears to form an integral part of the mineralized matrix. Probably important to cell-matrix interaction.

Cellular Location

Secreted

Tissue Location

Detected in cerebrospinal fluid and urine (at protein level) (PubMed:25326458, PubMed:36213313,

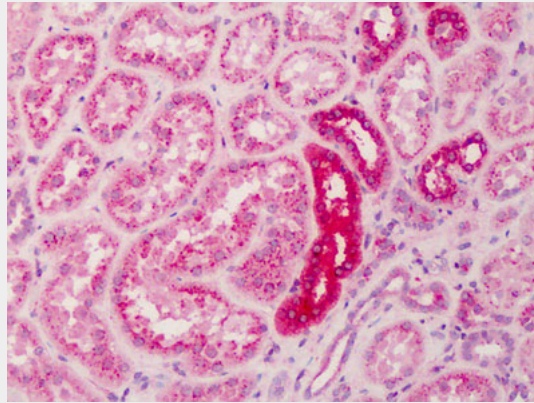
PubMed:37453717) Bone. Found in plasma.

SPP1 / Osteopontin Antibody (N-Terminus) - Protocols

Provided below are standard protocols that you may find useful for product applications.

- [Western Blot](#)
- [Blocking Peptides](#)
- [Dot Blot](#)
- [Immunohistochemistry](#)
- [Immunofluorescence](#)
- [Immunoprecipitation](#)
- [Flow Cytometry](#)
- [Cell Culture](#)

SPP1 / Osteopontin Antibody (N-Terminus) - Images



Anti-Osteopontin antibody IHC of human kidney.

SPP1 / Osteopontin Antibody (N-Terminus) - Background

Binds tightly to hydroxyapatite. Appears to form an integral part of the mineralized matrix. Probably important to cell-matrix interaction.

SPP1 / Osteopontin Antibody (N-Terminus) - References

- Kiefer M.C., et al. *Nucleic Acids Res.* 17:3306-3306(1989).
Young M.F., et al. *Genomics* 7:491-502(1990).
Shiraga H., et al. *Proc. Natl. Acad. Sci. U.S.A.* 89:426-430(1992).
Crosby A.H., et al. *Genomics* 27:155-160(1995).
Hijiya N., et al. *Biochem. J.* 303:255-262(1994).