

PCNA / Cyclin Antibody (Internal)
Rabbit Polyclonal Antibody
Catalog # ALS11344**Specification**

PCNA / Cyclin Antibody (Internal) - Product Information

Application	IHC, WB
Primary Accession	P12004
Reactivity	Human, Mouse, Rat, Monkey, Chicken, Xenopus, Bovine, Fish, Dog
Host	Rabbit
Clonality	Polyclonal
Calculated MW	29kDa KDa

PCNA / Cyclin Antibody (Internal) - Additional Information**Gene ID** 5111**Other Names**

Proliferating cell nuclear antigen, PCNA, Cyclin, PCNA

Target/Specificity

An internal region of human PCNA protein.

Reconstitution & Storage

+4°C or -20°C, Avoid repeated freezing and thawing.

Precautions

PCNA / Cyclin Antibody (Internal) is for research use only and not for use in diagnostic or therapeutic procedures.

PCNA / Cyclin Antibody (Internal) - Protein Information**Name** PCNA**Function**

Auxiliary protein of DNA polymerase delta and epsilon, is involved in the control of eukaryotic DNA replication by increasing the polymerase's processibility during elongation of the leading strand (PubMed:35585232). Induces a robust stimulatory effect on the 3'-5' exonuclease and 3'-phosphodiesterase, but not apurinic-aprimidinic (AP) endonuclease, APEX2 activities. Has to be loaded onto DNA in order to be able to stimulate APEX2. Plays a key role in DNA damage response (DDR) by being conveniently positioned at the replication fork to coordinate DNA replication with DNA repair and DNA damage tolerance pathways (PubMed:24939902). Acts as a loading platform to recruit DDR proteins that allow completion of DNA replication after DNA damage and promote postreplication repair: Monoubiquitinated PCNA leads to recruitment of translesion (TLS) polymerases, while 'Lys-63'-linked polyubiquitination of PCNA is involved in error-free pathway and employs

recombination mechanisms to synthesize across the lesion (PubMed:24695737).

Cellular Location

Nucleus Note=Colocalizes with CREBBP, EP300 and POLD1 to sites of DNA damage (PubMed:24939902). Forms nuclear foci representing sites of ongoing DNA replication and vary in morphology and number during S phase (PubMed:15543136). Co-localizes with SMARCA5/SNF2H and BAZ1B/WSTF at replication foci during S phase (PubMed:15543136). Together with APEX2, is redistributed in discrete nuclear foci in presence of oxidative DNA damaging agents.

Volume

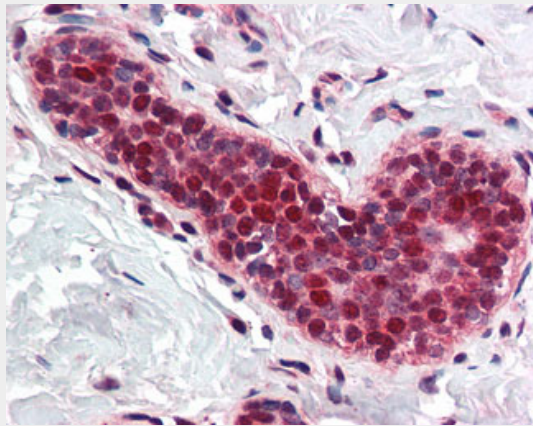
50 μ l

PCNA / Cyclin Antibody (Internal) - Protocols

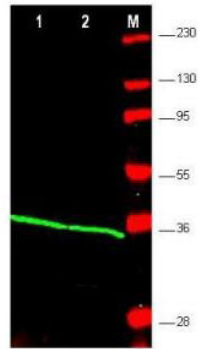
Provided below are standard protocols that you may find useful for product applications.

- [Western Blot](#)
- [Blocking Peptides](#)
- [Dot Blot](#)
- [Immunohistochemistry](#)
- [Immunofluorescence](#)
- [Immunoprecipitation](#)
- [Flow Cytometry](#)
- [Cell Culture](#)

PCNA / Cyclin Antibody (Internal) - Images



Anti-PCNA antibody IHC of human breast.



Anti-PCNA Antibody - Western Blot.

PCNA / Cyclin Antibody (Internal) - Background

Auxiliary protein of DNA polymerase delta and is involved in the control of eukaryotic DNA replication by increasing the polymerase's processibility during elongation of the leading strand. Induces a robust stimulatory effect on the 3'- 5' exonuclease and 3'-phosphodiesterase, but not apurinic- apyrimidinic (AP) endonuclease, APEX2 activities. Has to be loaded onto DNA in order to be able to stimulate APEX2. Plays a key role in DNA damage response (DDR) by being conveniently positioned at the replication fork to coordinate DNA replication with DNA repair and DNA damage tolerance pathways. Acts as a loading platform to recruit DDR proteins that allow completion of DNA replication after DNA damage and promote postreplication repair: Monoubiquitinated PCNA leads to recruitment of translesion (TLS) polymerases, while 'Lys-63'-linked polyubiquitination of PCNA is involved in error-free pathway and employs recombination mechanisms to synthesize across the lesion.

PCNA / Cyclin Antibody (Internal) - References

- Almendral J.M., et al. Proc. Natl. Acad. Sci. U.S.A. 84:1575-1579(1987).
- Travali S., et al. J. Biol. Chem. 264:7466-7472(1989).
- Ota T., et al. Nat. Genet. 36:40-45(2004).
- Deloukas P., et al. Nature 414:865-871(2001).
- Mural R.J., et al. Submitted (SEP-2005) to the EMBL/GenBank/DDBJ databases.