

**BMI1 / PCGF4 Antibody (aa252-264)**  
**Goat Polyclonal Antibody**  
**Catalog # ALS11310****Specification**

---

**BMI1 / PCGF4 Antibody (aa252-264) - Product Information**

Application	IHC, IF
Primary Accession	<a href="#">P35226</a>
Reactivity	Human
Host	Goat
Clonality	Polyclonal

**BMI1 / PCGF4 Antibody (aa252-264) - Additional Information****Gene ID** 100532731;648**Other Names**

Polycomb complex protein BMI-1, Polycomb group RING finger protein 4, RING finger protein 51, BMI1, PCGF4, RNF51

**Target/Specificity**

Amino acids 252-264 of human Bmi1 protein.

**Reconstitution & Storage**

Short term 4°C, long term aliquot and store at -20°C, avoid freeze thaw cycles. Store undiluted.

**Precautions**

BMI1 / PCGF4 Antibody (aa252-264) is for research use only and not for use in diagnostic or therapeutic procedures.

**BMI1 / PCGF4 Antibody (aa252-264) - Protein Information****Name** BMI1**Synonyms** PCGF4, RNF51**Function**

Component of a Polycomb group (PcG) multiprotein PRC1-like complex, a complex class required to maintain the transcriptionally repressive state of many genes, including Hox genes, throughout development. PcG PRC1 complex acts via chromatin remodeling and modification of histones; it mediates monoubiquitination of histone H2A 'Lys-119', rendering chromatin heritably changed in its expressibility (PubMed: [15386022](http://www.uniprot.org/citations/15386022) target="\_blank">15386022</a>, PubMed: [16359901](http://www.uniprot.org/citations/16359901) target="\_blank">16359901</a>, PubMed: [16714294](http://www.uniprot.org/citations/16714294) target="\_blank">16714294</a>, PubMed: [21772249](http://www.uniprot.org/citations/21772249) target="\_blank">21772249</a>, PubMed: [25355358](http://www.uniprot.org/citations/25355358) target="\_blank">25355358</a>, PubMed: [26151332](http://www.uniprot.org/citations/26151332) target="\_blank">26151332</a>, PubMed: [27827373](http://www.uniprot.org/citations/27827373) target="\_blank">27827373</a>)

target="\_blank">27827373</a>). The complex composed of RNF2, UB2D3 and BMI1 binds nucleosomes, and has activity only with nucleosomal histone H2A (PubMed:<a href="http://www.uniprot.org/citations/21772249" target="\_blank">21772249</a>, PubMed:<a href="http://www.uniprot.org/citations/25355358" target="\_blank">25355358</a>). In the PRC1-like complex, regulates the E3 ubiquitin-protein ligase activity of RNF2/RING2 (PubMed:<a href="http://www.uniprot.org/citations/15386022" target="\_blank">15386022</a>, PubMed:<a href="http://www.uniprot.org/citations/21772249" target="\_blank">21772249</a>, PubMed:<a href="http://www.uniprot.org/citations/26151332" target="\_blank">26151332</a>).

#### Cellular Location

Nucleus. Cytoplasm

#### Volume

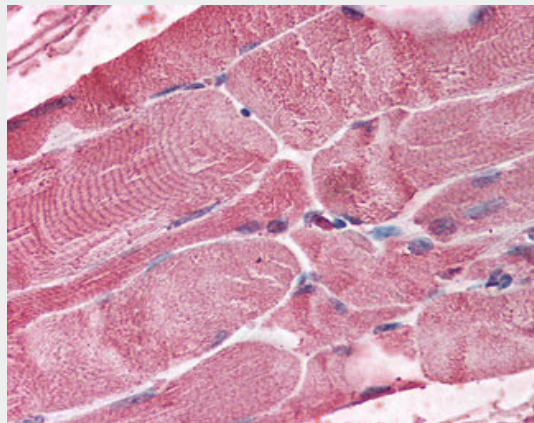
50 µl

### BMI1 / PCGF4 Antibody (aa252-264) - Protocols

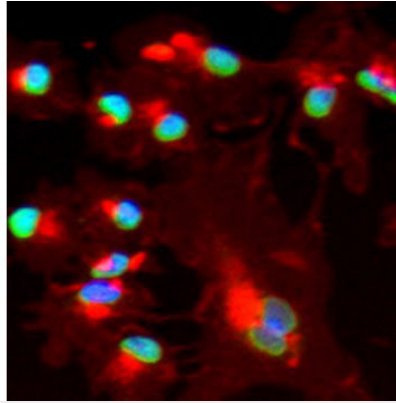
Provided below are standard protocols that you may find useful for product applications.

- [Western Blot](#)
- [Blocking Peptides](#)
- [Dot Blot](#)
- [Immunohistochemistry](#)
- [Immunofluorescence](#)
- [Immunoprecipitation](#)
- [Flow Cytometry](#)
- [Cell Culture](#)

### BMI1 / PCGF4 Antibody (aa252-264) - Images



Anti-BMI-1 antibody IHC of human skeletal muscle.



Anti-Bmi1 Antibody - Immunofluorescence Microscopy.