

B2M / Beta 2 Microglobulin Antibody
Rabbit Polyclonal Antibody
Catalog # ALS11301**Specification**

B2M / Beta 2 Microglobulin Antibody - Product Information

Application	IHC, IF
Primary Accession	P61769
Reactivity	Human
Host	Rabbit
Clonality	Polyclonal
Calculated MW	14kDa KDa

B2M / Beta 2 Microglobulin Antibody - Additional Information**Gene ID** 567**Other Names**

Beta-2-microglobulin, Beta-2-microglobulin form pl 5.3, B2M

Target/Specificity

B2-Microglobulin [Human Urine].

Reconstitution & Storage

Long term: -20°C; Short term: +4°C. Avoid repeat freeze-thaw cycles.

Precautions

B2M / Beta 2 Microglobulin Antibody is for research use only and not for use in diagnostic or therapeutic procedures.

B2M / Beta 2 Microglobulin Antibody - Protein Information**Name** B2M ([HGNC:914](#))**Function**

Component of the class I major histocompatibility complex (MHC). Involved in the presentation of peptide antigens to the immune system. Exogenously applied M.tuberculosis EsxA or EsxA-EsxB (or EsxA expressed in host) binds B2M and decreases its export to the cell surface (total protein levels do not change), probably leading to defects in class I antigen presentation (PubMed:25356553).

Cellular Location

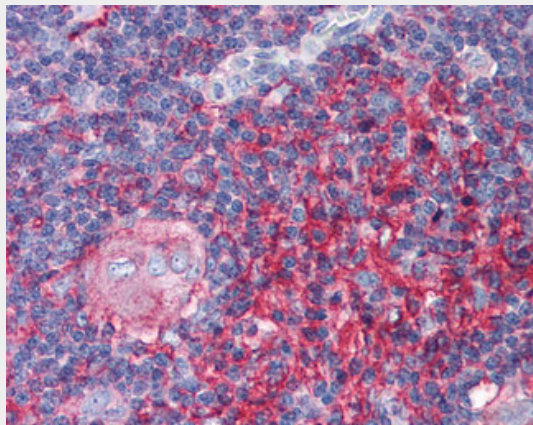
Secreted. Cell surface. Note=Detected in serum and urine (PubMed:1336137, PubMed:7554280). {ECO:0000269|PubMed:7554280, ECO:0000269|Ref.6}

B2M / Beta 2 Microglobulin Antibody - Protocols

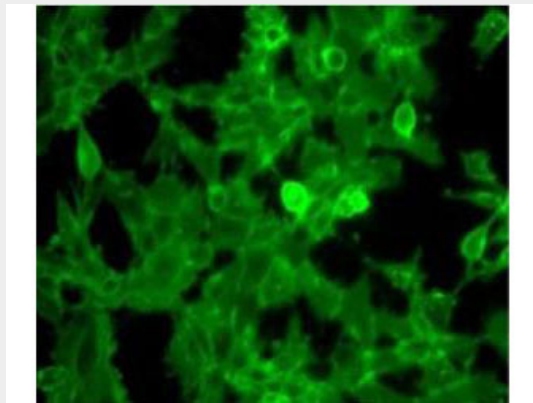
Provided below are standard protocols that you may find useful for product applications.

- [Western Blot](#)
- [Blocking Peptides](#)
- [Dot Blot](#)
- [Immunohistochemistry](#)
- [Immunofluorescence](#)
- [Immunoprecipitation](#)
- [Flow Cytometry](#)
- [Cell Culture](#)

B2M / Beta 2 Microglobulin Antibody - Images



Anti-B2M antibody IHC of human thymus.



Anti-Beta-2-Microglobulin Antibody - Immunofluorescence Microscopy.

B2M / Beta 2 Microglobulin Antibody - Background

Component of the class I major histocompatibility complex (MHC). Involved in the presentation of peptide antigens to the immune system.

B2M / Beta 2 Microglobulin Antibody - References

- Guessow D., et al. J. Immunol. 139:3132-3138(1987).
He X.H., et al. Sheng Wu Gong Cheng Xue Bao 20:99-103(2004).
Matsumoto K., et al. Submitted (DEC-1998) to the EMBL/GenBank/DDBJ databases.
Tan J., et al. Submitted (SEP-2005) to the EMBL/GenBank/DDBJ databases.
Zhao Z., et al. Submitted (JUN-1998) to the EMBL/GenBank/DDBJ databases.

