

**CCNL1 / Cyclin L1 Antibody**  
**Rabbit Polyclonal Antibody**  
**Catalog # ALS11242****Specification**

---

**CCNL1 / Cyclin L1 Antibody - Product Information**

Application	IHC
Primary Accession	<a href="#">O9UK58</a>
Reactivity	Human, Mouse, Rat
Host	Rabbit
Clonality	Polyclonal
Calculated MW	60kDa KDa

**CCNL1 / Cyclin L1 Antibody - Additional Information**

**Gene ID** 57018

**Other Names**

Cyclin-L1, Cyclin-L, CCNL1

**Target/Specificity**

Synthetic construct consisting of full length Human Cyclin L1b protein.

**Reconstitution & Storage**

+4°C or -20°C, Avoid repeated freezing and thawing.

**Precautions**

CCNL1 / Cyclin L1 Antibody is for research use only and not for use in diagnostic or therapeutic procedures.

**CCNL1 / Cyclin L1 Antibody - Protein Information**

**Name** CCNL1

**Function**

Involved in pre-mRNA splicing. Functions in association with cyclin-dependent kinases (CDKs) (PubMed:<a href="http://www.uniprot.org/citations/18216018" target="\_blank">18216018</a>). Inhibited by the CDK-specific inhibitor CDKN1A/p21 (PubMed:<a href="http://www.uniprot.org/citations/11980906" target="\_blank">11980906</a>). May play a role in the regulation of RNA polymerase II (pol II). May be a candidate proto- oncogene in head and neck squamous cell carcinomas (HNSCC) (PubMed:<a href="http://www.uniprot.org/citations/12414649" target="\_blank">12414649</a>, PubMed:<a href="http://www.uniprot.org/citations/15700036" target="\_blank">15700036</a>).

**Cellular Location**

Nucleus speckle. Nucleus, nucleoplasm. Note=Found in nuclear intrachromatin granules clusters (IGC), also called nuclear speckles, which are storage compartments for nuclear proteins involved in mRNA processing.

### Tissue Location

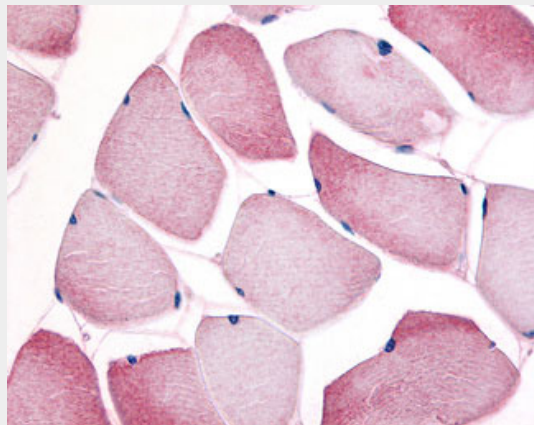
Widely expressed. Overexpression in primary tumors of head and neck squamous cell carcinomas (HNSCC)

### CCNL1 / Cyclin L1 Antibody - Protocols

Provided below are standard protocols that you may find useful for product applications.

- [Western Blot](#)
- [Blocking Peptides](#)
- [Dot Blot](#)
- [Immunohistochemistry](#)
- [Immunofluorescence](#)
- [Immunoprecipitation](#)
- [Flow Cytometry](#)
- [Cell Culture](#)

### CCNL1 / Cyclin L1 Antibody - Images



Anti-CCNL1 / Cyclin L1 antibody IHC of human skeletal muscle.

### CCNL1 / Cyclin L1 Antibody - Background

Transcriptional regulator which participates in regulating the pre-mRNA splicing process. Seems to be involved in the regulation of RNA polymerase II (pol II). Functions in association with cyclin-dependent kinases (CDKs) and has a role in the second step of splicing. May be a candidate proto-oncogene in head and neck squamous cell carcinomas (HNSCC). Inhibited by the CDK-specific inhibitor p21.

### CCNL1 / Cyclin L1 Antibody - References

- Dickinson L.A., et al. *J. Biol. Chem.* 277:25465-25473(2002).  
Ota T., et al. *Nat. Genet.* 36:40-45(2004).  
Mural R.J., et al. Submitted (SEP-2005) to the EMBL/GenBank/DDBJ databases.  
Zhang Q.-H., et al. *Genome Res.* 10:1546-1560(2000).  
Clark H.F., et al. *Genome Res.* 13:2265-2270(2003).