

**Sprouty 4 / SPRY4 Antibody (aa306-322)**  
**Rabbit Polyclonal Antibody**  
**Catalog # ALS11241**

## Specification

---

### Sprouty 4 / SPRY4 Antibody (aa306-322) - Product Information

Application	IHC
Primary Accession	<a href="#">O9C004</a>
Reactivity	Human
Host	Rabbit
Clonality	Polyclonal
Calculated MW	33kDa KDa

### Sprouty 4 / SPRY4 Antibody (aa306-322) - Additional Information

**Gene ID** 81848

#### Other Names

Protein sprouty homolog 4, Spry-4, SPRY4

#### Target/Specificity

Amino acids 306-322 of Human Sprouty-4 protein.

#### Reconstitution & Storage

+4°C or -20°C, Avoid repeated freezing and thawing.

#### Precautions

Sprouty 4 / SPRY4 Antibody (aa306-322) is for research use only and not for use in diagnostic or therapeutic procedures.

### Sprouty 4 / SPRY4 Antibody (aa306-322) - Protein Information

**Name** SPRY4

#### Function

Suppresses the insulin receptor and EGFR-transduced MAPK signaling pathway, but does not inhibit MAPK activation by a constitutively active mutant Ras (PubMed:<a href="http://www.uniprot.org/citations/12027893" target="\_blank">12027893</a>). Probably impairs the formation of GTP-Ras (PubMed:<a href="http://www.uniprot.org/citations/12027893" target="\_blank">12027893</a>). Inhibits Ras-independent, but not Ras-dependent, activation of RAF1 (PubMed:<a href="http://www.uniprot.org/citations/12717443" target="\_blank">12717443</a>). Represses integrin-mediated cell spreading via inhibition of TESK1-mediated phosphorylation of cofilin (PubMed:<a href="http://www.uniprot.org/citations/15584898" target="\_blank">15584898</a>).

#### Cellular Location

Cytoplasm. Cell projection, ruffle membrane; Peripheral membrane protein; Cytoplasmic side. Note=Found in the cytoplasm in unstimulated cells but is translocated to the membrane ruffles in

cells stimulated with EGF (epidermal growth factor) (By similarity). Colocalizes with TESK1 in vesicular spots in the cytoplasm (PubMed:15584898) {ECO:0000250|UniProtKB:Q9WTP2, ECO:0000269|PubMed:15584898}

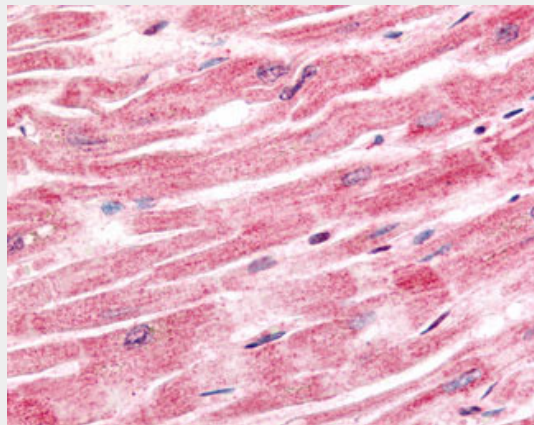
**Volume**  
50 µl

### **Sprouty 4 / SPRY4 Antibody (aa306-322) - Protocols**

Provided below are standard protocols that you may find useful for product applications.

- [Western Blot](#)
- [Blocking Peptides](#)
- [Dot Blot](#)
- [Immunohistochemistry](#)
- [Immunofluorescence](#)
- [Immunoprecipitation](#)
- [Flow Cytometry](#)
- [Cell Culture](#)

### **Sprouty 4 / SPRY4 Antibody (aa306-322) - Images**



Anti-SPRY4 antibody IHC of human heart.

### **Sprouty 4 / SPRY4 Antibody (aa306-322) - Background**

Suppresses the insulin receptor and EGFR-transduced MAPK signaling pathway, but does not inhibit MAPK activation by a constitutively active mutant Ras. Probably impairs the formation of GTP-Ras. Inhibits Ras-independent, but not Ras-dependent, activation of RAF1.

### **Sprouty 4 / SPRY4 Antibody (aa306-322) - References**

Leeksa O.C., et al. Eur. J. Biochem. 269:2546-2556(2002).  
Ding W., et al. Am. J. Physiol. 287:L52-L59(2004).  
Ota T., et al. Nat. Genet. 36:40-45(2004).  
Schmutz J., et al. Nature 431:268-274(2004).  
Sasaki A., et al. Nat. Cell Biol. 5:427-432(2003).