

GPC4 / Glypican 4 Antibody (Internal)
Rabbit Polyclonal Antibody
Catalog # ALS11167**Specification**

GPC4 / Glypican 4 Antibody (Internal) - Product Information

Application	IHC
Primary Accession	O75487
Reactivity	Human, Mouse, Hamster
Host	Rabbit
Clonality	Polyclonal
Calculated MW	62kDa KDa

GPC4 / Glypican 4 Antibody (Internal) - Additional Information**Gene ID** 2239**Other Names**

Glypican-4, K-glypican, Secreted glypican-4, GPC4

Target/Specificity

Human GPC4 / Glypican 4. BLAST analysis of the peptide immunogen showed no homology with other human proteins.

Reconstitution & Storage

Long term: -70°C; Short term: +4°C

Precautions

GPC4 / Glypican 4 Antibody (Internal) is for research use only and not for use in diagnostic or therapeutic procedures.

GPC4 / Glypican 4 Antibody (Internal) - Protein Information**Name** GPC4**Function**

Cell surface proteoglycan that bears heparan sulfate. May be involved in the development of kidney tubules and of the central nervous system (By similarity).

Cellular Location

Cell membrane; Lipid-anchor, GPI- anchor; Extracellular side

Volume

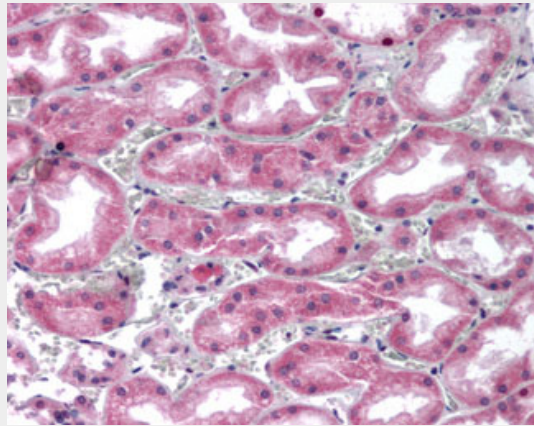
50 µl

GPC4 / Glypican 4 Antibody (Internal) - Protocols

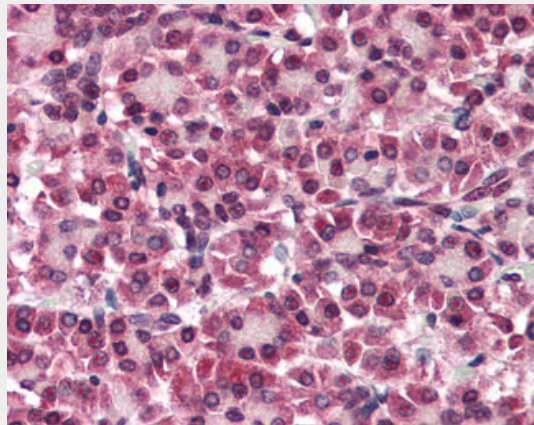
Provided below are standard protocols that you may find useful for product applications.

- [Western Blot](#)
- [Blocking Peptides](#)
- [Dot Blot](#)
- [Immunohistochemistry](#)
- [Immunofluorescence](#)
- [Immunoprecipitation](#)
- [Flow Cytometry](#)
- [Cell Culture](#)

GPC4 / Glypican 4 Antibody (Internal) - Images



Anti-GPC4 / Glypican 4 antibody ALS11167 IHC of human kidney.



Anti-GPC4 / Glypican 4 antibody ALS11167 IHC of human pancreas.

GPC4 / Glypican 4 Antibody (Internal) - Background

Cell surface proteoglycan that bears heparan sulfate. May be involved in the development of kidney tubules and of the central nervous system (By similarity).

GPC4 / Glypican 4 Antibody (Internal) - References

- Veugelers M., et al. *Genomics* 53:1-11(1998).
Pilia G., et al. Submitted (MAY-1998) to the EMBL/GenBank/DDBJ databases.
Zhang B., et al. Submitted (AUG-2001) to the EMBL/GenBank/DDBJ databases.
Clark H.F., et al. *Genome Res.* 13:2265-2270(2003).
Ota T., et al. *Nat. Genet.* 36:40-45(2004).

