

**ENTPD2 Antibody (Internal)**  
**Rabbit Polyclonal Antibody**  
**Catalog # ALS11157**

**Specification**

---

**ENTPD2 Antibody (Internal) - Product Information**

Application	IHC
Primary Accession	<a href="#">O9Y5L3</a>
Reactivity	Human
Host	Rabbit
Clonality	Polyclonal
Calculated MW	54kDa KDa

**ENTPD2 Antibody (Internal) - Additional Information**

**Gene ID** 954

**Other Names**

Ectonucleoside triphosphate diphosphohydrolase 2, NTPDase 2, 3.6.1.-, CD39 antigen-like 1, Ecto-ATP diphosphohydrolase 2, Ecto-ATPDase 2, Ecto-ATPase 2, ENTPD2, CD39L1

**Target/Specificity**

Human ENTPD2. BLAST analysis of the peptide immunogen showed no homology with other human proteins.

**Reconstitution & Storage**

Long term: -70°C; Short term: +4°C

**Precautions**

ENTPD2 Antibody (Internal) is for research use only and not for use in diagnostic or therapeutic procedures.

**ENTPD2 Antibody (Internal) - Protein Information**

**Name** ENTPD2

**Synonyms** CD39L1

**Function**

In the nervous system, could hydrolyze ATP and other nucleotides to regulate purinergic neurotransmission. Hydrolyzes ADP only to a marginal extent. The order of activity with different substrates is ATP > GTP > CTP = ITP > UTP >> ADP = UDP.

**Cellular Location**

[Isoform Long]: Cell membrane; Multi-pass membrane protein [Isoform gamma]: Endoplasmic reticulum membrane; Multi-pass membrane protein

**Tissue Location**

Brain, placenta, skeletal muscle, kidney, pancreas, heart, ovary, testis, colon, small intestine, prostate and pancreas. No expression in adult thymus, spleen, lung, liver and peripheral blood leukocytes

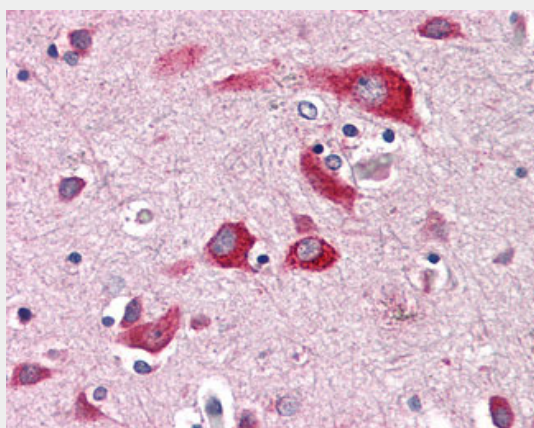
**Volume**  
50 µl

### **ENTPD2 Antibody (Internal) - Protocols**

Provided below are standard protocols that you may find useful for product applications.

- [Western Blot](#)
- [Blocking Peptides](#)
- [Dot Blot](#)
- [Immunohistochemistry](#)
- [Immunofluorescence](#)
- [Immunoprecipitation](#)
- [Flow Cytometry](#)
- [Cell Culture](#)

### **ENTPD2 Antibody (Internal) - Images**



Anti-ENTPD2 antibody ALS11157 IHC of human brain, cortex.

### **ENTPD2 Antibody (Internal) - Background**

In the nervous system, could hydrolyze ATP and other nucleotides to regulate purinergic neurotransmission. Hydrolyzes ADP only to a marginal extent. The order of activity with different substrates is ATP > GTP > CTP = ITP > UTP >> ADP = UDP.

### **ENTPD2 Antibody (Internal) - References**

Chadwick B.P., et al. *Mamm. Genome* 8:668-672(1997).  
Mateo J., et al. *Br. J. Pharmacol.* 128:396-402(1999).  
Mukasa T., et al. *Biochemistry* 44:11160-11170(2005).  
Humphray S.J., et al. *Nature* 429:369-374(2004).  
Mural R.J., et al. Submitted (JUL-2005) to the EMBL/GenBank/DDBJ databases.