

**SLC1A4 / ASCT1 Antibody (N-Terminus)**  
**Rabbit Polyclonal Antibody**  
**Catalog # ALS11154****Specification**

---

**SLC1A4 / ASCT1 Antibody (N-Terminus) - Product Information**

Application	IHC
Primary Accession	<a href="#">P43007</a>
Reactivity	Human, Monkey
Host	Rabbit
Clonality	Polyclonal
Calculated MW	56kDa KDa

**SLC1A4 / ASCT1 Antibody (N-Terminus) - Additional Information****Gene ID** 6509**Other Names**

Neutral amino acid transporter A, Alanine/serine/cysteine/threonine transporter 1, ASCT-1, SATT, Solute carrier family 1 member 4, SLC1A4, ASCT1, SATT

**Target/Specificity**

Human SLC1A4. BLAST analysis of the peptide immunogen showed no homology with other human proteins.

**Reconstitution & Storage**

Long term: -70°C; Short term: +4°C

**Precautions**

SLC1A4 / ASCT1 Antibody (N-Terminus) is for research use only and not for use in diagnostic or therapeutic procedures.

**SLC1A4 / ASCT1 Antibody (N-Terminus) - Protein Information****Name** SLC1A4 {ECO:0000303|PubMed:7896285, ECO:0000312|HGNC:HGNC:10942}**Function**

Sodium-dependent neutral amino-acid transporter that mediates transport of alanine, serine, cysteine, proline, hydroxyproline and threonine.

**Cellular Location**

Membrane; Multi- pass membrane protein. Melanosome. Note=Identified by mass spectrometry in melanosome fractions from stage I to stage IV

**Tissue Location**

Expressed mostly in brain, muscle, and pancreas but detected in all tissues examined.

**Volume**

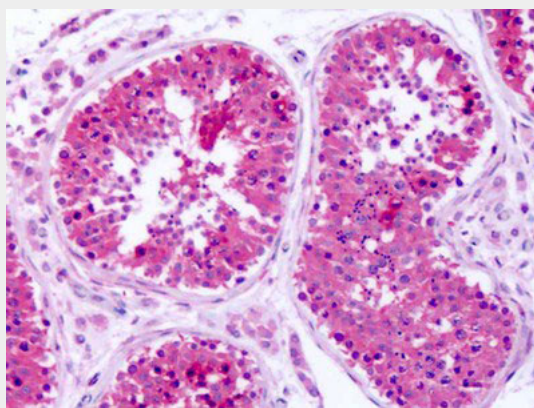
50  $\mu$ l

### SLC1A4 / ASCT1 Antibody (N-Terminus) - Protocols

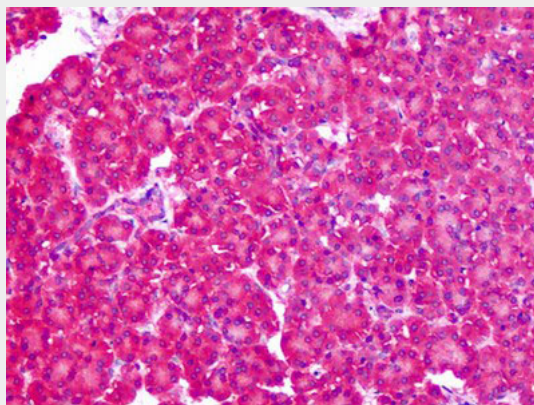
Provided below are standard protocols that you may find useful for product applications.

- [Western Blot](#)
- [Blocking Peptides](#)
- [Dot Blot](#)
- [Immunohistochemistry](#)
- [Immunofluorescence](#)
- [Immunoprecipitation](#)
- [Flow Cytometry](#)
- [Cell Culture](#)

### SLC1A4 / ASCT1 Antibody (N-Terminus) - Images



Anti-ASCT1 / SLC1A4 antibody IHC of human testis.



Anti-ASCT1 / SLC1A4 antibody IHC of human pancreas.

### SLC1A4 / ASCT1 Antibody (N-Terminus) - Background

Transporter for alanine, serine, cysteine, and threonine. Exhibits sodium dependence.

### SLC1A4 / ASCT1 Antibody (N-Terminus) - References

Arriza J.L., et al. J. Biol. Chem. 268:15329-15332(1993).

Shafqat S.,et al.J. Biol. Chem. 268:15351-15355(1993).  
Hofmann K.,et al.Genomics 24:20-26(1994).  
Ota T.,et al.Nat. Genet. 36:40-45(2004).  
Hillier L.W.,et al.Nature 434:724-731(2005).