

GABRA3 Antibody (N-Terminus)
Rabbit Polyclonal Antibody
Catalog # ALS11144**Specification**

GABRA3 Antibody (N-Terminus) - Product Information

Application	IHC
Primary Accession	P34903
Reactivity	Human, Mouse, Rabbit, Monkey, Horse, Bovine, Dog
Host	Rabbit
Clonality	Polyclonal
Calculated MW	55kDa KDa

GABRA3 Antibody (N-Terminus) - Additional Information**Gene ID** 2556**Other Names**

Gamma-aminobutyric acid receptor subunit alpha-3, GABA(A) receptor subunit alpha-3, GABRA3

Target/Specificity

Human GABRA3. BLAST analysis of the peptide immunogen showed no homology with other human proteins.

Reconstitution & Storage

Long term: -70°C; Short term: +4°C

Precautions

GABRA3 Antibody (N-Terminus) is for research use only and not for use in diagnostic or therapeutic procedures.

GABRA3 Antibody (N-Terminus) - Protein Information**Name** GABRA3 ([HGNC:4077](#))**Function**

Alpha subunit of the heteropentameric ligand-gated chloride channel gated by gamma-aminobutyric acid (GABA), a major inhibitory neurotransmitter in the brain (PubMed:[16412217](http://www.uniprot.org/citations/16412217), PubMed:[29053855](http://www.uniprot.org/citations/29053855)). GABA-gated chloride channels, also named GABA(A) receptors (GABAAR), consist of five subunits arranged around a central pore and contain GABA active binding site(s) located at the alpha and beta subunit interface(s) (By similarity). When activated by GABA, GABAARs selectively allow the flow of chloride anions across the cell membrane down their electrochemical gradient (PubMed:[16412217](http://www.uniprot.org/citations/16412217), PubMed:[29053855](http://www.uniprot.org/citations/29053855)). Chloride influx into the postsynaptic neuron following GABAAR opening decreases the neuron ability to

generate a new action potential, thereby reducing nerve transmission (PubMed:16412217, PubMed:29053855).

Cellular Location

Postsynaptic cell membrane {ECO:0000250|UniProtKB:P14867}; Multi-pass membrane protein.
Cell membrane {ECO:0000250|UniProtKB:P14867}; Multi-pass membrane protein

Volume

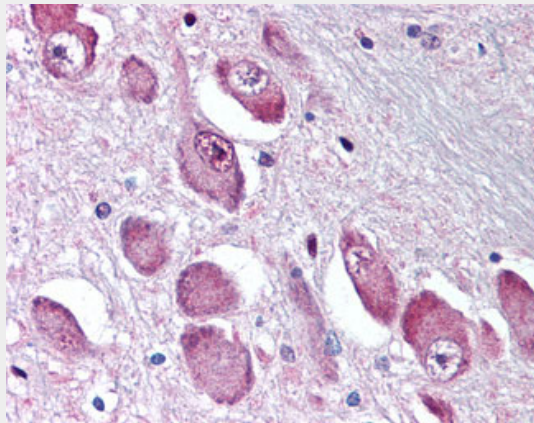
50 μ l

GABRA3 Antibody (N-Terminus) - Protocols

Provided below are standard protocols that you may find useful for product applications.

- [Western Blot](#)
- [Blocking Peptides](#)
- [Dot Blot](#)
- [Immunohistochemistry](#)
- [Immunofluorescence](#)
- [Immunoprecipitation](#)
- [Flow Cytometry](#)
- [Cell Culture](#)

GABRA3 Antibody (N-Terminus) - Images



Anti-GABRA3 antibody ALS11144 IHC of human brain, basal nucleus of Meynert.

GABRA3 Antibody (N-Terminus) - Background

GABA, the major inhibitory neurotransmitter in the vertebrate brain, mediates neuronal inhibition by binding to the GABA/benzodiazepine receptor and opening an integral chloride channel.

GABRA3 Antibody (N-Terminus) - References

Hadingham K.L., et al. Mol. Pharmacol. 43:970-975(1993).
Amir R., et al. Am. J. Med. Genet. 90:69-71(2000).