

WNT4 Antibody (Internal)
Rabbit Polyclonal Antibody
Catalog # ALS11136**Specification**

WNT4 Antibody (Internal) - Product Information

Application	IHC
Primary Accession	P56705
Reactivity	Human, Mouse, Hamster, Monkey, Pig, Horse, Bovine, Dog
Host	Rabbit
Clonality	Polyclonal
Calculated MW	39kDa KDa

WNT4 Antibody (Internal) - Additional Information**Gene ID** 54361**Other Names**

Protein Wnt-4, WNT4

Target/Specificity

Human WNT4. BLAST analysis of the peptide immunogen showed no homology with other human proteins.

Reconstitution & Storage

Long term: -70°C; Short term: +4°C

Precautions

WNT4 Antibody (Internal) is for research use only and not for use in diagnostic or therapeutic procedures.

WNT4 Antibody (Internal) - Protein Information**Name** WNT4**Function**

Ligand for members of the frizzled family of seven transmembrane receptors (Probable). Plays an important role in the embryonic development of the urogenital tract and the lung (PubMed: [15317892](http://www.uniprot.org/citations/15317892), PubMed: [16959810](http://www.uniprot.org/citations/16959810), PubMed: [18179883](http://www.uniprot.org/citations/18179883), PubMed: [18182450](http://www.uniprot.org/citations/18182450)). Required for normal mesenchyme to epithelium transition during embryonic kidney development. Required for the formation of early epithelial renal vesicles during kidney development (By similarity). Required for normal formation of the Mullerian duct in females, and normal levels of oocytes in the ovaries (PubMed: [15317892](http://www.uniprot.org/citations/15317892), PubMed: [16959810](http://www.uniprot.org/citations/16959810),

PubMed: 18182450). Required for normal down-regulation of 3 beta-hydroxysteroid dehydrogenase in the ovary (PubMed: 15317892, PubMed: 16959810, PubMed: 18182450). Required for normal lung development and for normal patterning of tracheal cartilage rings (By similarity).

Cellular Location

Secreted, extracellular space, extracellular matrix

Volume

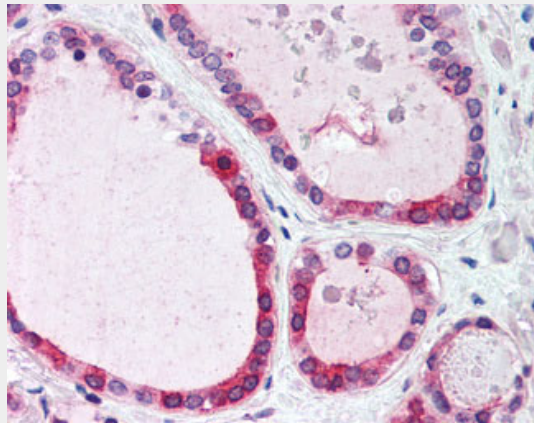
50 µl

WNT4 Antibody (Internal) - Protocols

Provided below are standard protocols that you may find useful for product applications.

- [Western Blot](#)
- [Blocking Peptides](#)
- [Dot Blot](#)
- [Immunohistochemistry](#)
- [Immunofluorescence](#)
- [Immunoprecipitation](#)
- [Flow Cytometry](#)
- [Cell Culture](#)

WNT4 Antibody (Internal) - Images



Anti-WNT4 antibody ALS11136 IHC of human thyroid.

WNT4 Antibody (Internal) - Background

Ligand for members of the frizzled family of seven transmembrane receptors. Probable developmental protein. May be a signaling molecule which affects the development of discrete regions of tissues. Is likely to signal over only few cell diameters (By similarity). Overexpression may be associated with abnormal proliferation in human breast tissue.

WNT4 Antibody (Internal) - References

Testa T.T., et al. Submitted (AUG-2000) to the EMBL/GenBank/DDBJ databases.

Jordan B.K., et al. Am. J. Hum. Genet. 68:1102-1109(2001).

Clark H.F., et al. Genome Res. 13:2265-2270(2003).

Ota T., et al. Nat. Genet. 36:40-45(2004).

Kalnina N., et al. Submitted (OCT-2004) to the EMBL/GenBank/DDBJ databases.