

**WNT1 Antibody (Internal)**  
**Rabbit Polyclonal Antibody**  
**Catalog # ALS11131****Specification**

---

**WNT1 Antibody (Internal) - Product Information**

Application	IHC
Primary Accession	<a href="#">P04628</a>
Reactivity	Human, Mouse, Rabbit, Hamster, Monkey, Pig, Horse, Bovine, Dog
Host	Rabbit
Clonality	Polyclonal
Calculated MW	41kDa KDa

**WNT1 Antibody (Internal) - Additional Information****Gene ID** 7471**Other Names**

Proto-oncogene Wnt-1, Proto-oncogene Int-1 homolog, WNT1, INT1

**Target/Specificity**

Human WNT1. BLAST analysis of the peptide immunogen showed no homology with other human proteins.

**Reconstitution & Storage**

Long term: -70°C; Short term: +4°C

**Precautions**

WNT1 Antibody (Internal) is for research use only and not for use in diagnostic or therapeutic procedures.

**WNT1 Antibody (Internal) - Protein Information****Name** WNT1**Synonyms** INT1**Function**

Ligand for members of the frizzled family of seven transmembrane receptors (Probable). Acts in the canonical Wnt signaling pathway by promoting beta-catenin-dependent transcriptional activation (PubMed: [23499309](http://www.uniprot.org/citations/23499309), PubMed: [23656646](http://www.uniprot.org/citations/23656646), PubMed: [26902720](http://www.uniprot.org/citations/26902720), PubMed: [28528193](http://www.uniprot.org/citations/28528193)). In some developmental processes, is also a ligand for the coreceptor RYK, thus triggering Wnt signaling (By similarity). Plays an essential role in the development of the embryonic brain and central nervous system (CNS) (By similarity). Has a role

in osteoblast function, bone development and bone homeostasis (PubMed:<a href="http://www.uniprot.org/citations/23499309" target="\_blank">23499309</a>, PubMed:<a href="http://www.uniprot.org/citations/23656646" target="\_blank">23656646</a>).

#### Cellular Location

Secreted, extracellular space, extracellular matrix. Secreted

#### Volume

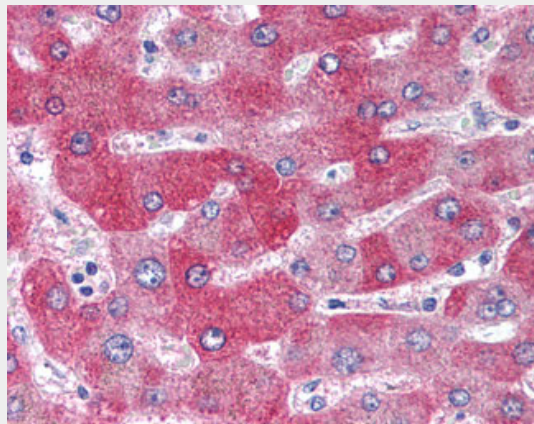
50 µl

### WNT1 Antibody (Internal) - Protocols

Provided below are standard protocols that you may find useful for product applications.

- [Western Blot](#)
- [Blocking Peptides](#)
- [Dot Blot](#)
- [Immunohistochemistry](#)
- [Immunofluorescence](#)
- [Immunoprecipitation](#)
- [Flow Cytometry](#)
- [Cell Culture](#)

### WNT1 Antibody (Internal) - Images



Anti-WNT1 antibody ALS11131 IHC of human liver.

### WNT1 Antibody (Internal) - Background

Ligand for members of the frizzled family of seven transmembrane receptors. In some developmental processes, is also a ligand for the coreceptor RYK, thus triggering Wnt signaling. Probable developmental protein. May be a signaling molecule important in CNS development. Is likely to signal over only few cell diameters. Has a role in osteoblast function and bone development.

### WNT1 Antibody (Internal) - References

- van Ooyen A., et al. EMBO J. 4:2905-2909(1985).  
Kalnine N., et al. Submitted (OCT-2004) to the EMBL/GenBank/DDBJ databases.  
Mural R.J., et al. Submitted (JUL-2005) to the EMBL/GenBank/DDBJ databases.  
Doubrovaska L., et al. Cell. Signal. 23:837-848(2011).

Keupp K., et al. Am. J. Hum. Genet. 92:565-574(2013).