

**P2RX3 / P2X3 Antibody (C-Terminus)**  
**Rabbit Polyclonal Antibody**  
**Catalog # ALS11128****Specification**

---

**P2RX3 / P2X3 Antibody (C-Terminus) - Product Information**

Application	IHC
Primary Accession	<a href="#">P56373</a>
Reactivity	Human, Monkey
Host	Rabbit
Clonality	Polyclonal
Calculated MW	44kDa KDa

**P2RX3 / P2X3 Antibody (C-Terminus) - Additional Information****Gene ID** 5024**Other Names**

P2X purinoceptor 3, P2X3, ATP receptor, Purinergic receptor, P2RX3

**Target/Specificity**

Human P2RX3 / P2X3. BLAST analysis of the peptide immunogen showed no homology with other human proteins.

**Reconstitution & Storage**

Long term: -70°C; Short term: +4°C

**Precautions**

P2RX3 / P2X3 Antibody (C-Terminus) is for research use only and not for use in diagnostic or therapeutic procedures.

**P2RX3 / P2X3 Antibody (C-Terminus) - Protein Information****Name** P2RX3**Function**

Receptor for ATP that acts as a ligand-gated cation channel (PubMed:&lt;a href="http://www.uniprot.org/citations/27626375" target="\_blank"&gt;27626375&lt;/a&gt;). Plays a role in sensory perception. Required for normal perception of pain. Required for normal taste perception (By similarity).

**Cellular Location**

Cell membrane; Multi-pass membrane protein

**Volume**

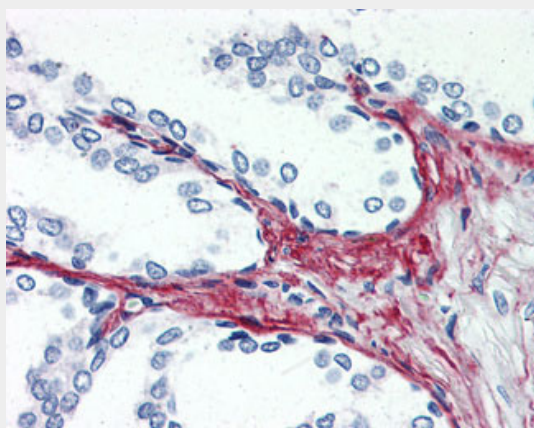
50 µl

## P2RX3 / P2X3 Antibody (C-Terminus) - Protocols

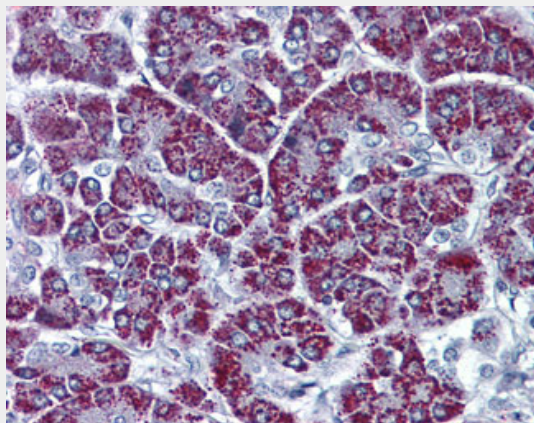
Provided below are standard protocols that you may find useful for product applications.

- [Western Blot](#)
- [Blocking Peptides](#)
- [Dot Blot](#)
- [Immunohistochemistry](#)
- [Immunofluorescence](#)
- [Immunoprecipitation](#)
- [Flow Cytometry](#)
- [Cell Culture](#)

## P2RX3 / P2X3 Antibody (C-Terminus) - Images



Anti-P2RX3 / P2X3 antibody ALS11128 IHC of human prostate.



Anti-P2RX3 / P2X3 antibody ALS11128 IHC of human pancreas.

## P2RX3 / P2X3 Antibody (C-Terminus) - Background

Receptor for ATP that acts as a ligand-gated ion channel.

## P2RX3 / P2X3 Antibody (C-Terminus) - References

Garcia-Guzman M., et al. Mol. Pharmacol. 51:109-118(1997).  
Funatsuki K., et al. Submitted (JUL-1998) to the EMBL/GenBank/DBJ databases.  
Taylor T.D., et al. Nature 440:497-500(2006).