

ITGAX / CD11c Antibody (Internal)
Rabbit Polyclonal Antibody
Catalog # ALS11098

Specification

ITGAX / CD11c Antibody (Internal) - Product Information

Application	IHC
Primary Accession	P20702
Reactivity	Human
Host	Rabbit
Clonality	Polyclonal
Calculated MW	128kDa KDa

ITGAX / CD11c Antibody (Internal) - Additional Information

Gene ID 3687

Other Names

Integrin alpha-X, CD11 antigen-like family member C, Leu M5, Leukocyte adhesion glycoprotein p150, 95 alpha chain, Leukocyte adhesion receptor p150, 95, CD11c, ITGAX, CD11C

Target/Specificity

Human CD11c. BLAST analysis of the peptide immunogen showed no homology with other human proteins.

Reconstitution & Storage

Long term: -70°C; Short term: +4°C

Precautions

ITGAX / CD11c Antibody (Internal) is for research use only and not for use in diagnostic or therapeutic procedures.

ITGAX / CD11c Antibody (Internal) - Protein Information

Name ITGAX

Synonyms CD11C

Function

Integrin alpha-X/beta-2 is a receptor for fibrinogen. It recognizes the sequence G-P-R in fibrinogen. It mediates cell-cell interaction during inflammatory responses. It is especially important in monocyte adhesion and chemotaxis.

Cellular Location

Membrane; Single-pass type I membrane protein.

Tissue Location

Predominantly expressed in monocytes and granulocytes

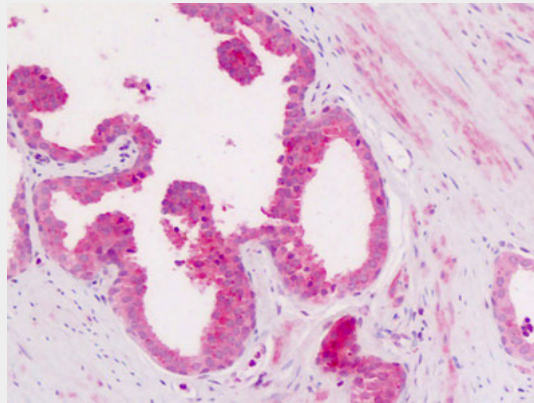
Volume
50 µl

ITGAX / CD11c Antibody (Internal) - Protocols

Provided below are standard protocols that you may find useful for product applications.

- [Western Blot](#)
- [Blocking Peptides](#)
- [Dot Blot](#)
- [Immunohistochemistry](#)
- [Immunofluorescence](#)
- [Immunoprecipitation](#)
- [Flow Cytometry](#)
- [Cell Culture](#)

ITGAX / CD11c Antibody (Internal) - Images



Anti-CD11c antibody IHC of human prostate.

ITGAX / CD11c Antibody (Internal) - Background

Integrin alpha-X/beta-2 is a receptor for fibrinogen. It recognizes the sequence G-P-R in fibrinogen. It mediates cell-cell interaction during inflammatory responses. It is especially important in monocyte adhesion and chemotaxis.

ITGAX / CD11c Antibody (Internal) - References

- Corbi A.L., et al. EMBO J. 6:4023-4028(1987).
Corbi A.L., et al. J. Biol. Chem. 265:2782-2788(1990).
Corbi A.L., et al. J. Biol. Chem. 265:12750-12751(1990).
Miller L.J., et al. J. Immunol. 138:2381-2383(1987).
Chen R., et al. J. Proteome Res. 8:651-661(2009).