

**WNT10A Antibody (Internal)**  
**Rabbit Polyclonal Antibody**  
**Catalog # ALS11061****Specification**

---

**WNT10A Antibody (Internal) - Product Information**

Application	IHC
Primary Accession	<a href="#">O9GZT5</a>
Reactivity	Human, Rabbit, Monkey, Bovine, Dog
Host	Rabbit
Clonality	Polyclonal
Calculated MW	46kDa KDa

**WNT10A Antibody (Internal) - Additional Information****Gene ID** 80326**Other Names**

Protein Wnt-10a, WNT10A

**Target/Specificity**

Human WNT10A. BLAST analysis of the peptide immunogen showed no homology with other human proteins, except PTPRD (44%).

**Reconstitution & Storage**

Long term: -70°C; Short term: +4°C

**Precautions**

WNT10A Antibody (Internal) is for research use only and not for use in diagnostic or therapeutic procedures.

**WNT10A Antibody (Internal) - Protein Information****Name** WNT10A**Function**

Ligand for members of the frizzled family of seven transmembrane receptors (Probable). Functions in the canonical Wnt/beta-catenin signaling pathway (By similarity). Plays a role in normal ectoderm development (PubMed: [17847007](http://www.uniprot.org/citations/17847007), PubMed: [28589954](http://www.uniprot.org/citations/28589954)). Required for normal tooth development (PubMed: [17847007](http://www.uniprot.org/citations/17847007), PubMed: [28589954](http://www.uniprot.org/citations/28589954), PubMed: [29178643](http://www.uniprot.org/citations/29178643)). Required for normal postnatal development and maintenance of tongue papillae and sweat ducts (PubMed: [28589954](http://www.uniprot.org/citations/28589954)). Required for normal proliferation of basal cells in tongue filiform papillae, plantar epithelium and sweat ducts. Required for normal expression of keratins in tongue papillae (By similarity). Required for normal

expression of KRT9 in foot plant epithelium (PubMed:<a href="http://www.uniprot.org/citations/28589954" target="\_blank">28589954</a>). Required for normal hair follicle function (PubMed:<a href="http://www.uniprot.org/citations/28589954" target="\_blank">28589954</a>).

#### Cellular Location

Secreted, extracellular space, extracellular matrix. Secreted

#### Volume

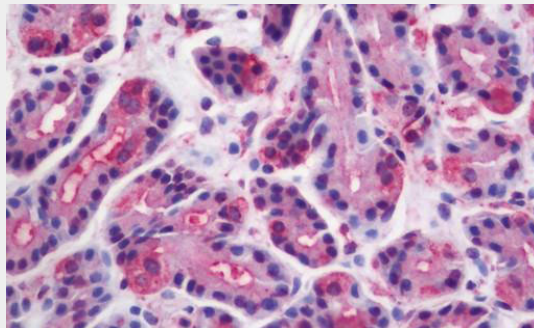
84  $\mu$ l

### WNT10A Antibody (Internal) - Protocols

Provided below are standard protocols that you may find useful for product applications.

- [Western Blot](#)
- [Blocking Peptides](#)
- [Dot Blot](#)
- [Immunohistochemistry](#)
- [Immunofluorescence](#)
- [Immunoprecipitation](#)
- [Flow Cytometry](#)
- [Cell Culture](#)

### WNT10A Antibody (Internal) - Images



Human Stomach: Formalin-Fixed, Paraffin-Embedded (FFPE)

### WNT10A Antibody (Internal) - Background

Ligand for members of the frizzled family of seven transmembrane receptors. Probable developmental protein. May be a signaling molecule important in CNS development. Is likely to signal over only few cell diameters.

### WNT10A Antibody (Internal) - References

Testa T.T., et al. Submitted (AUG-2000) to the EMBL/GenBank/DDBJ databases.  
Rump A., et al. Submitted (OCT-2000) to the EMBL/GenBank/DDBJ databases.  
Kirikoshi H., et al. Biochem. Biophys. Res. Commun. 283:798-805(2001).  
Ota T., et al. Nat. Genet. 36:40-45(2004).  
Hillier L.W., et al. Nature 434:724-731(2005).