

SEMA4B Antibody (Internal)
Rabbit Polyclonal Antibody
Catalog # ALS11055**Specification**

SEMA4B Antibody (Internal) - Product Information

Application	IHC
Primary Accession	O9NPR2
Reactivity	Human
Host	Rabbit
Clonality	Polyclonal

SEMA4B Antibody (Internal) - Additional Information**Gene ID** 10509**Other Names**

Semaphorin-4B, SEMA4B, KIAA1745, SEMAC

Target/Specificity

Human SEMA4B. BLAST analysis of the peptide immunogen showed no homology with other human proteins.

Reconstitution & Storage

Short term 4°C, long term aliquot and store at -20°C, avoid freeze thaw cycles.

Precautions

SEMA4B Antibody (Internal) is for research use only and not for use in diagnostic or therapeutic procedures.

SEMA4B Antibody (Internal) - Protein Information**Name** SEMA4B ([HGNC:10730](#))**Function**

Inhibits axonal extension by providing local signals to specify territories inaccessible for growing axons.

Cellular Location

Membrane; Single-pass type I membrane protein.

Volume

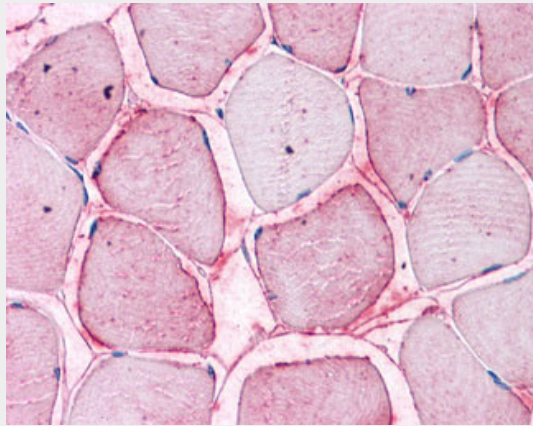
85 µl

SEMA4B Antibody (Internal) - Protocols

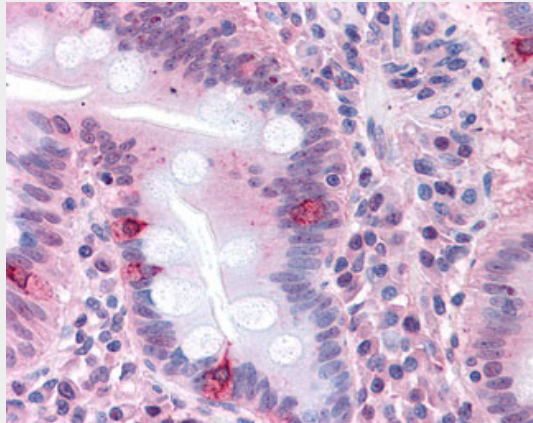
Provided below are standard protocols that you may find useful for product applications.

- [Western Blot](#)
- [Blocking Peptides](#)
- [Dot Blot](#)
- [Immunohistochemistry](#)
- [Immunofluorescence](#)
- [Immunoprecipitation](#)
- [Flow Cytometry](#)
- [Cell Culture](#)

SEMA4B Antibody (Internal) - Images



Anti-SEMA4B antibody ALS11055 IHC of human skeletal muscle.



Anti-SEMA4B antibody ALS11055 IHC of human small intestine.

SEMA4B Antibody (Internal) - Background

#N/A

SEMA4B Antibody (Internal) - References

#N/A