

CD27L / CD70 Antibody (Internal)
Rabbit Polyclonal Antibody
Catalog # ALS11020**Specification**

CD27L / CD70 Antibody (Internal) - Product Information

Application	IHC
Primary Accession	P32970
Reactivity	Human
Host	Rabbit
Clonality	Polyclonal
Calculated MW	21kDa KDa

CD27L / CD70 Antibody (Internal) - Additional Information**Gene ID** 970**Other Names**

CD70 antigen, CD27 ligand, CD27-L, Tumor necrosis factor ligand superfamily member 7, CD70, CD70, CD27L, CD27LG, TNFSF7

Target/Specificity

Human CD70. BLAST analysis of the peptide immunogen showed no homology with other human proteins.

Reconstitution & Storage

Long term: -70°C; Short term: +4°C

Precautions

CD27L / CD70 Antibody (Internal) is for research use only and not for use in diagnostic or therapeutic procedures.

CD27L / CD70 Antibody (Internal) - Protein Information**Name** CD70 ([HGNC:11937](#))**Function**Expressed at the plasma membrane of B cells, it is the ligand of the CD27 receptor which is specifically expressed at the surface of T cells (PubMed: [28011863](http://www.uniprot.org/citations/28011863), PubMed: [28011864](http://www.uniprot.org/citations/28011864), PubMed: [8387892](http://www.uniprot.org/citations/8387892)). The CD70-CD27 signaling pathway mediates antigen-specific T cell activation and expansion which in turn provides immune surveillance of B cells (PubMed: [28011863](http://www.uniprot.org/citations/28011863), PubMed: [28011864](http://www.uniprot.org/citations/28011864)).**Cellular Location**

Cell membrane; Single-pass type II membrane protein

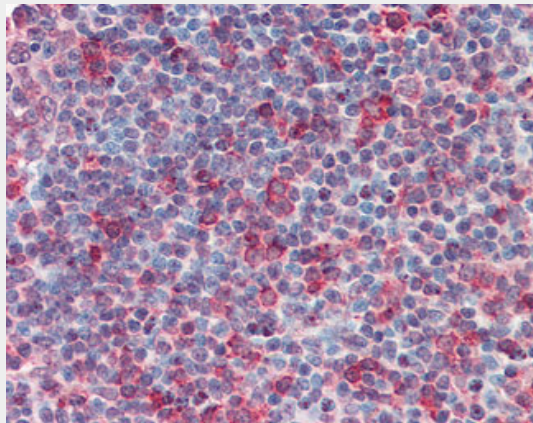
Volume

50 µl

CD27L / CD70 Antibody (Internal) - Protocols

Provided below are standard protocols that you may find useful for product applications.

- [Western Blot](#)
- [Blocking Peptides](#)
- [Dot Blot](#)
- [Immunohistochemistry](#)
- [Immunofluorescence](#)
- [Immunoprecipitation](#)
- [Flow Cytometry](#)
- [Cell Culture](#)

CD27L / CD70 Antibody (Internal) - Images

Anti-CD70 antibody ALS11020 IHC of human tonsil..

CD27L / CD70 Antibody (Internal) - Background

Cytokine that binds to CD27. Plays a role in T-cell activation. Induces the proliferation of costimulated T-cells and enhances the generation of cytolytic T-cells.

CD27L / CD70 Antibody (Internal) - References

- Goodwin R.G., et al. Cell 73:447-456(1993).
Bowman M.R., et al. J. Immunol. 152:1756-1761(1994).
Kalnina N., et al. Submitted (MAY-2003) to the EMBL/GenBank/DDBJ databases.
Ota T., et al. Nat. Genet. 36:40-45(2004).
Livingston R.J., et al. Submitted (OCT-2006) to the EMBL/GenBank/DDBJ databases.