

**TMPRSS4 Antibody (Internal)**  
**Rabbit Polyclonal Antibody**  
**Catalog # ALS11017**

**Specification**

---

**TMPRSS4 Antibody (Internal) - Product Information**

Application	IHC
Primary Accession	<a href="#">O9NRS4</a>
Reactivity	Human
Host	Rabbit
Clonality	Polyclonal
Calculated MW	48kDa KDa

**TMPRSS4 Antibody (Internal) - Additional Information**

**Gene ID** 56649

**Other Names**

Transmembrane protease serine 4, 3.4.21.-, Channel-activating protease 2, CAPH2, Membrane-type serine protease 2, MT-SP2, TMPRSS4, TMPRSS3

**Target/Specificity**

Human TMPRSS4. BLAST analysis of the peptide immunogen showed no homology with other human proteins.

**Reconstitution & Storage**

Long term: -70°C; Short term: +4°C

**Precautions**

TMPRSS4 Antibody (Internal) is for research use only and not for use in diagnostic or therapeutic procedures.

**TMPRSS4 Antibody (Internal) - Protein Information**

**Name** TMPRSS4 ([HGNC:11878](#))

**Function**

Plasma membrane-anchored serine protease that directly induces processing of pro-uPA/PLAU into the active form through proteolytic activity (PubMed:<a href="http://www.uniprot.org/citations/24434139" target="\_blank">24434139</a>). Seems to be capable of activating ENaC (By similarity).

**Cellular Location**

Cell membrane; Single-pass type II membrane protein

**Tissue Location**

High levels in pancreatic, gastric, colorectal and ampullary cancer. Very weak expression in normal gastrointestinal and urogenital tract (PubMed:10825129). Coexpressed with ACE2 within mature

enterocytes (PubMed:32404436).

**Volume**

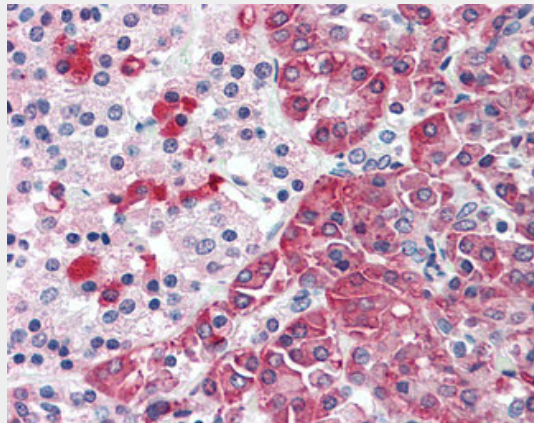
50  $\mu$ l

**TMPRSS4 Antibody (Internal) - Protocols**

Provided below are standard protocols that you may find useful for product applications.

- [Western Blot](#)
- [Blocking Peptides](#)
- [Dot Blot](#)
- [Immunohistochemistry](#)
- [Immunofluorescence](#)
- [Immunoprecipitation](#)
- [Flow Cytometry](#)
- [Cell Culture](#)

**TMPRSS4 Antibody (Internal) - Images**



Anti-TMPRSS4 antibody ALS11017 IHC of human pancreas.

**TMPRSS4 Antibody (Internal) - Background**

Probable protease. Seems to be capable of activating ENaC (By similarity).

**TMPRSS4 Antibody (Internal) - References**

- Wallrapp C., et al. *Cancer Res.* 60:2602-2606(2000).  
Smeekens S.S., et al. Submitted (DEC-1999) to the EMBL/GenBank/DDBJ databases.  
Ota T., et al. *Nat. Genet.* 36:40-45(2004).  
Clark H.F., et al. *Genome Res.* 13:2265-2270(2003).  
Taylor T.D., et al. *Nature* 440:497-500(2006).